

Sun City Computer Club

Windows SIG

November 9, 2021

**Questions, Comments, Suggestions welcomed at
any time**

Even Now

- [Audio Recording of this session](#)
- Use the link above to access MP4 audio recording
- Audio Recording in Progress
- SIG attendees are required to be members of the chartered club sponsoring that SIG.
Sun City Community Association By-law
- Sig leader – anyone?
- Topic Suggestions – plea(se)
- Your suggestions future presentations
- In person meetings

- Ever want to be a presenter??

Presenter???

- Second Tuesday each month
- Windows 10 21H1 19043.1320



Updates available

Last checked: Today, 12:17 PM

Windows Malicious Software Removal Tool x64 - v5.95 (KB890830)

Status: Installing - 0%

2021-11 Cumulative Update for Windows 10 Version 21H1 for x64-based Systems (KB5007186)

Status: Downloading - 0%

[View optional updates](#)

Microsoft Patch Tuesday Schedule B



Updates available

Last checked: Today, 12:17 PM

Windows Malicious Software Removal Tool x64 - v5.95 (KB890830)

Status: Installing - 0%

2021-11 Cumulative Update for Windows 10 Version 21H1 for x64-based Systems (KB5007186)

Status: Downloading - 0%

[View optional updates](#)

Microsoft Patch Tuesday Schedule B



Updates available

Last checked: Today, 12:22 PM

Windows Malicious Software Removal Tool x64 - v5.95 (KB890830)

Status: Installing - 0%

2021-11 Cumulative Update for Windows 10 Version 21H2 for x64-based Systems (KB5007186)

Status: Downloading - 100%

Microsoft Patch Tuesday Schedule B



Restart required (estimate: 4 min)

Your device will restart outside of active hours.

[Schedule the restart](#)

2021-11 Cumulative Update for Windows 11 for x64-based Systems (KB5007215)

Microsoft Patch Tuesday Schedule B



Updates available

Last checked: Today, 12:22 PM

Windows Malicious Software Removal Tool x64 - v5.95 (KB890830)

Status: Installing - 0%

2021-11 Cumulative Update for Windows 10 Version 21H2 for x64-based Systems (KB5007186)

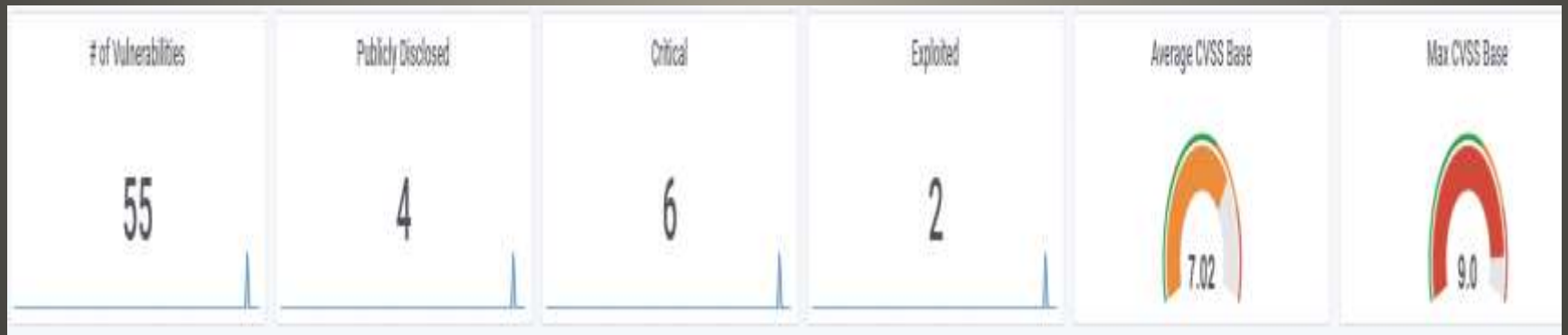
Status: Downloading - 100%

Microsoft Patch Tuesday Schedule B

- 21H2 19044.1348 KB5007186
- Windows Pro Insider Dev 22495.1000
Cumulative Update .NET 3.5 & 4.8
KB5007296
Malicious Software Removal Tool x64
KB890830
Windows 11 Insider Preview 22494.1000
- Windows 11 21H2 22000.318
KB5007215
- Windows 10 21H1 19043.1348
- KB5007186

Windows Update

- 55 Vulnerabilities 6 Critical 4 Previously disclosed 2 actively being exploited



**Microsoft Patch Tuesday
Schedule B**

- March 1, 2022
For Windows 7, 8, 8.1

OneDrive support to end

- Windows 11
Phased rollout



Delivery Optimization

Delivery Optimization provides you with Windows and Store app updates and other Microsoft products quickly and reliably.

Allow downloads from other PCs

If you have an unreliable Internet connection or are updating multiple devices, allowing downloads from other PCs can help speed up the process.

If you turn this on, your PC may send parts of previously downloaded Windows updates and apps to PCs on your local network or on the Internet. Your PC won't upload content to other PCs on the Internet when you're on a metered network.

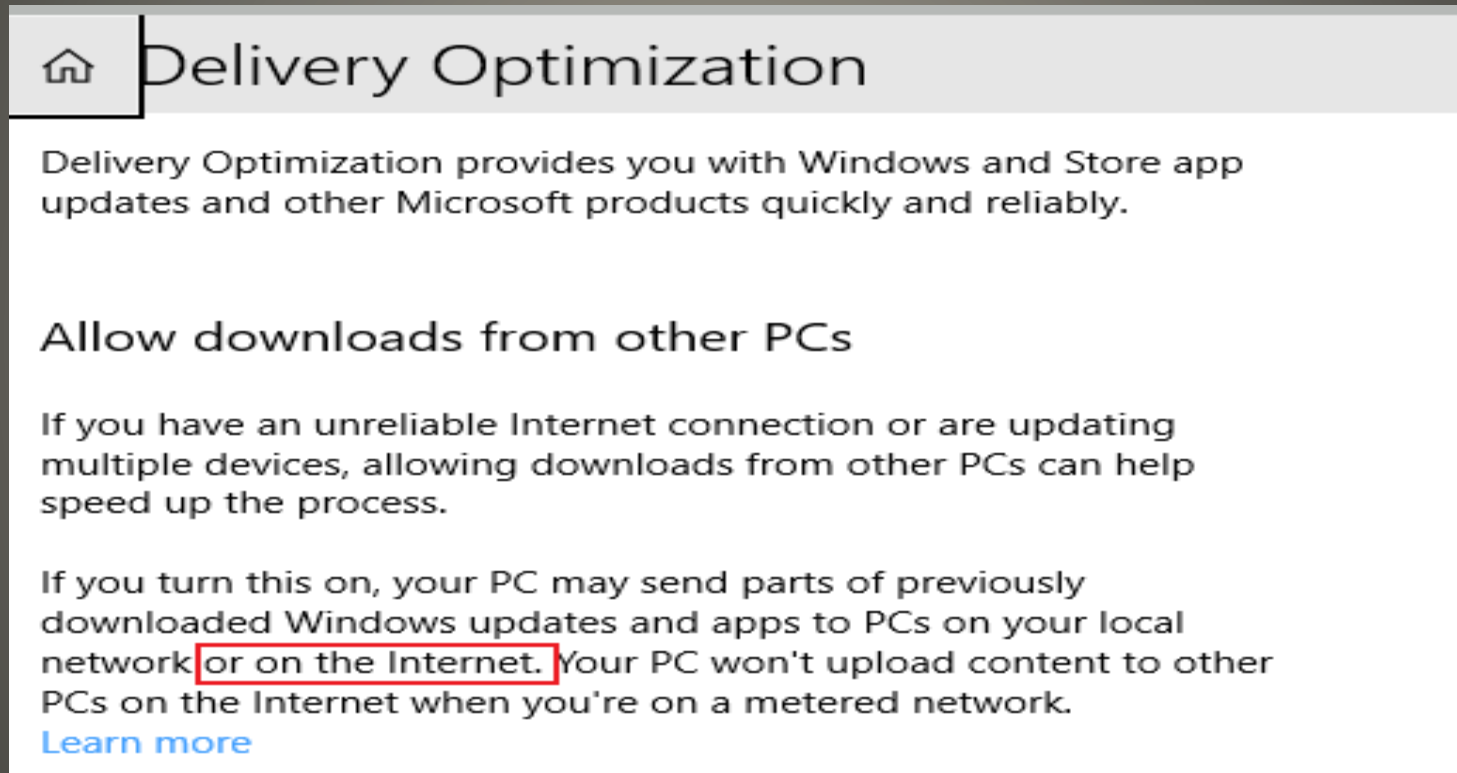
[Learn more](#)

Windows 10 Privacy

- Restart of S mode and Windows 10X

Microsoft Windows 11 SE

- Delivery Optimization
- Settings > Update & security > Delivery Optimization



The screenshot shows the Windows Settings application, specifically the 'Delivery Optimization' page. At the top, there is a navigation bar with a home icon and the title 'Delivery Optimization'. Below the title, a paragraph states: 'Delivery Optimization provides you with Windows and Store app updates and other Microsoft products quickly and reliably.' This is followed by a section header 'Allow downloads from other PCs'. The text below explains: 'If you have an unreliable Internet connection or are updating multiple devices, allowing downloads from other PCs can help speed up the process.' Another paragraph follows: 'If you turn this on, your PC may send parts of previously downloaded Windows updates and apps to PCs on your local network or on the Internet. Your PC won't upload content to other PCs on the Internet when you're on a metered network.' At the bottom of this section is a blue link that says 'Learn more'.

Delivery Optimization

Delivery Optimization provides you with Windows and Store app updates and other Microsoft products quickly and reliably.

Allow downloads from other PCs

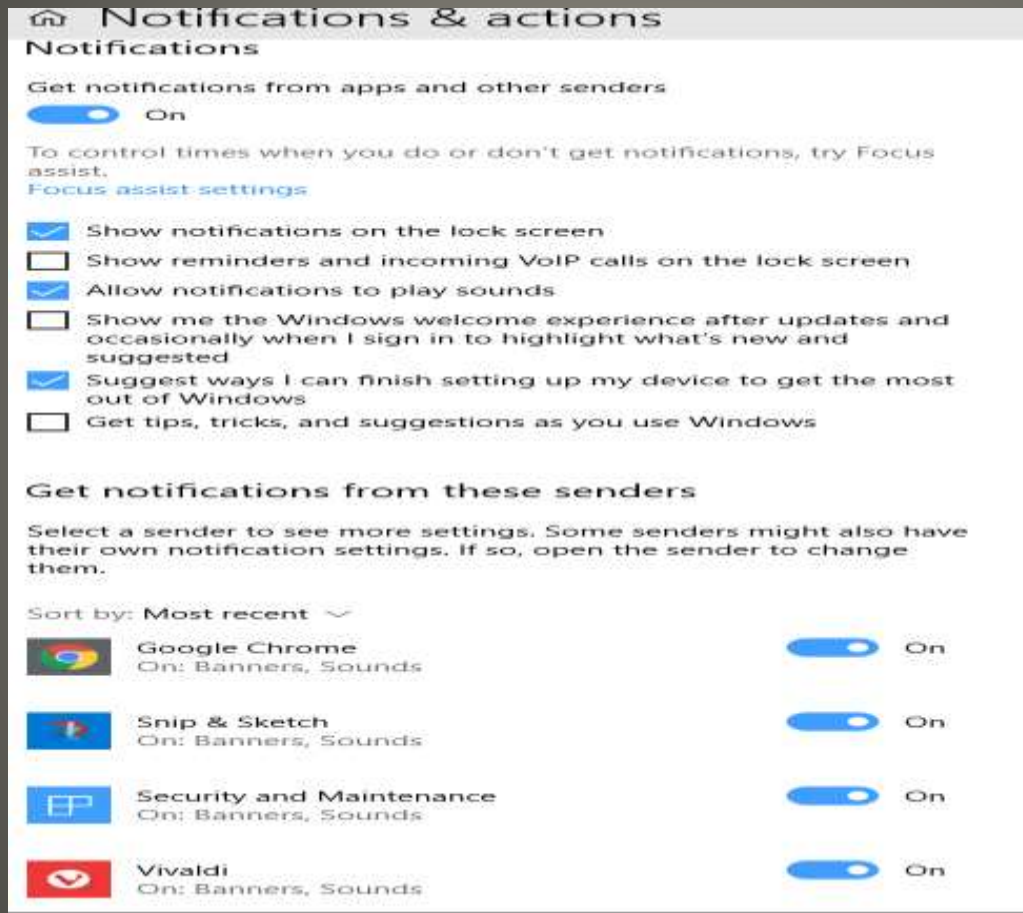
If you have an unreliable Internet connection or are updating multiple devices, allowing downloads from other PCs can help speed up the process.

If you turn this on, your PC may send parts of previously downloaded Windows updates and apps to PCs on your local network or on the Internet. Your PC won't upload content to other PCs on the Internet when you're on a metered network.

[Learn more](#)

Windows Privacy

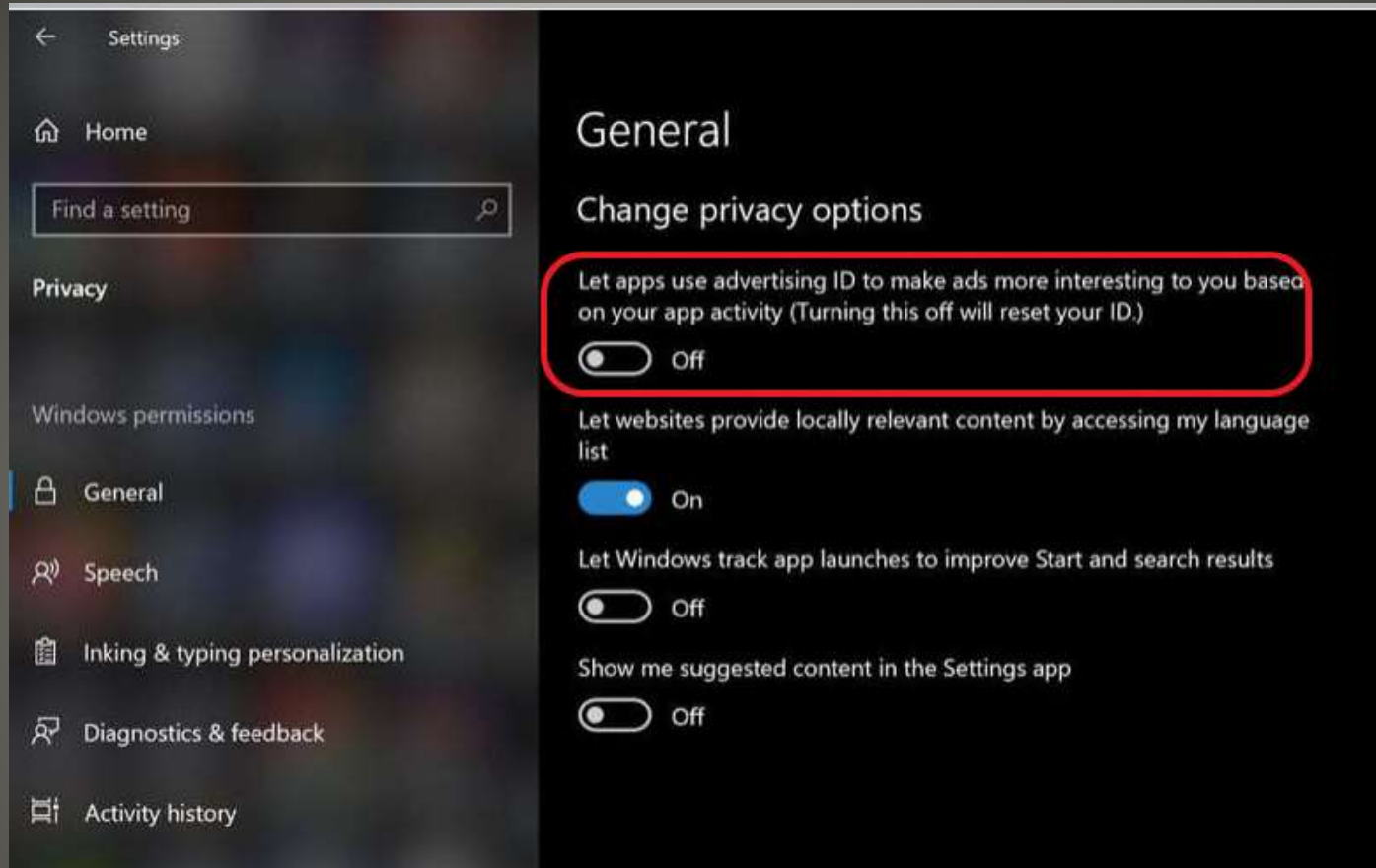
- Settings > System > Notifications & actions

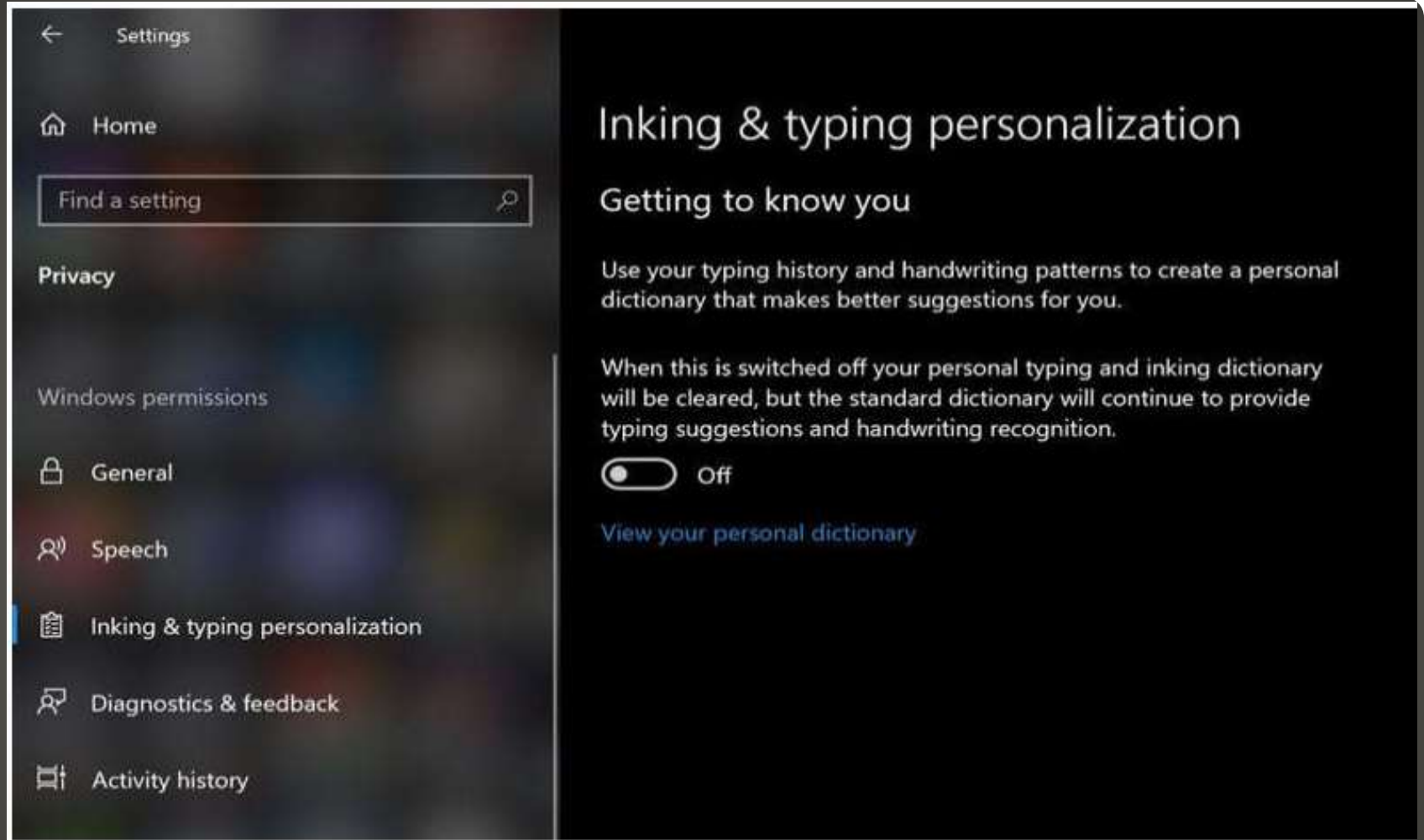


Nosey Notifications

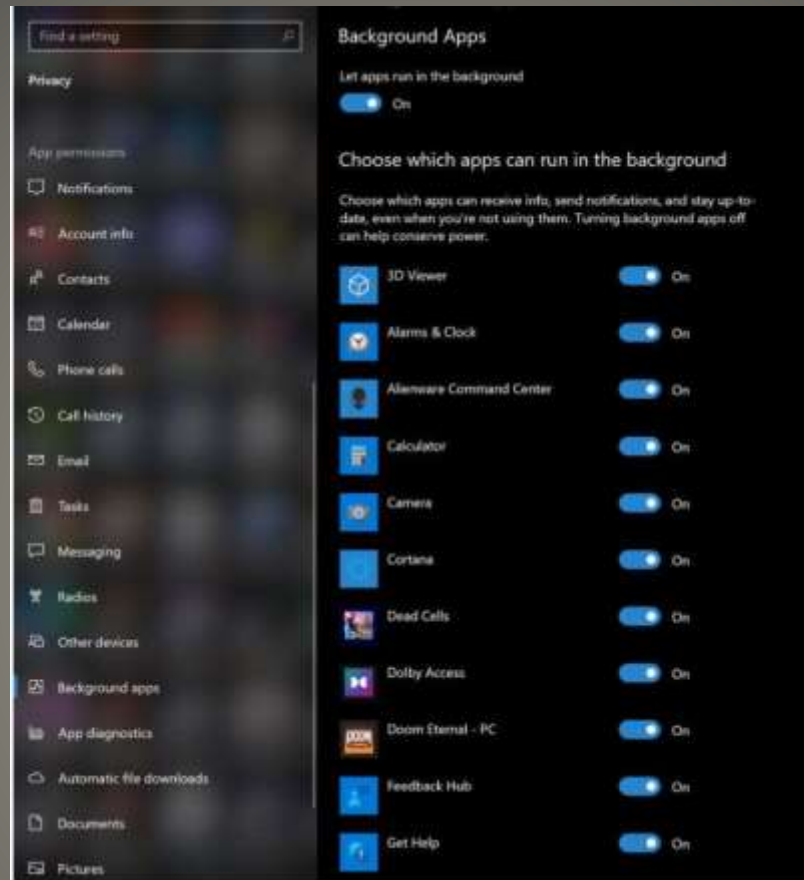


Start Menu Annoyances





Getting to know you

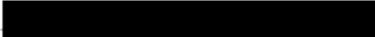


Background Apps

- OneDrive
- Linux
- Windows Security
- Etc..
- Control

Background Apps Control

Sync your settings

Sync your settings to other devices using 

[How does syncing work?](#)

Sync settings

☐ Off

Individual sync settings

Theme

☒ On

Passwords

☒ On

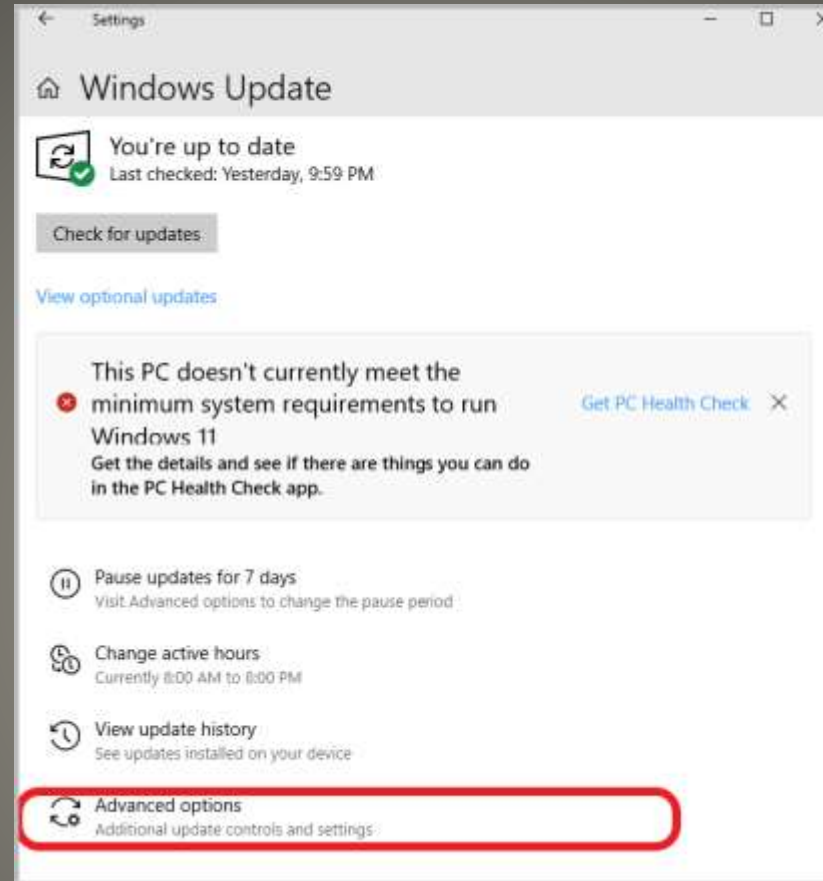
Language preferences

☒ On

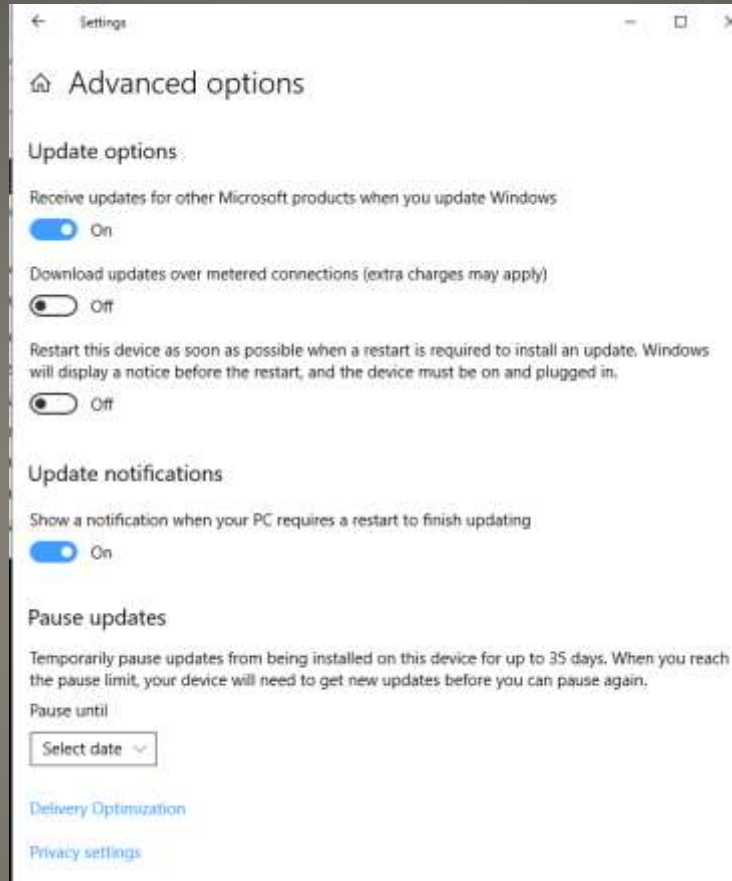
Other Windows settings

☒ On

Sync your Settings



Windows Update Advanced Options



Windows Update Advanced Options Home

Advanced options

Update options

Receive updates for other Microsoft products when you update Windows

☒ On

Download updates over metered connections (extra charges may apply)

☐ Off

Restart this device as soon as possible when a restart is required to install an update. Windows will display a notice before the restart, and the device must be on and plugged in.

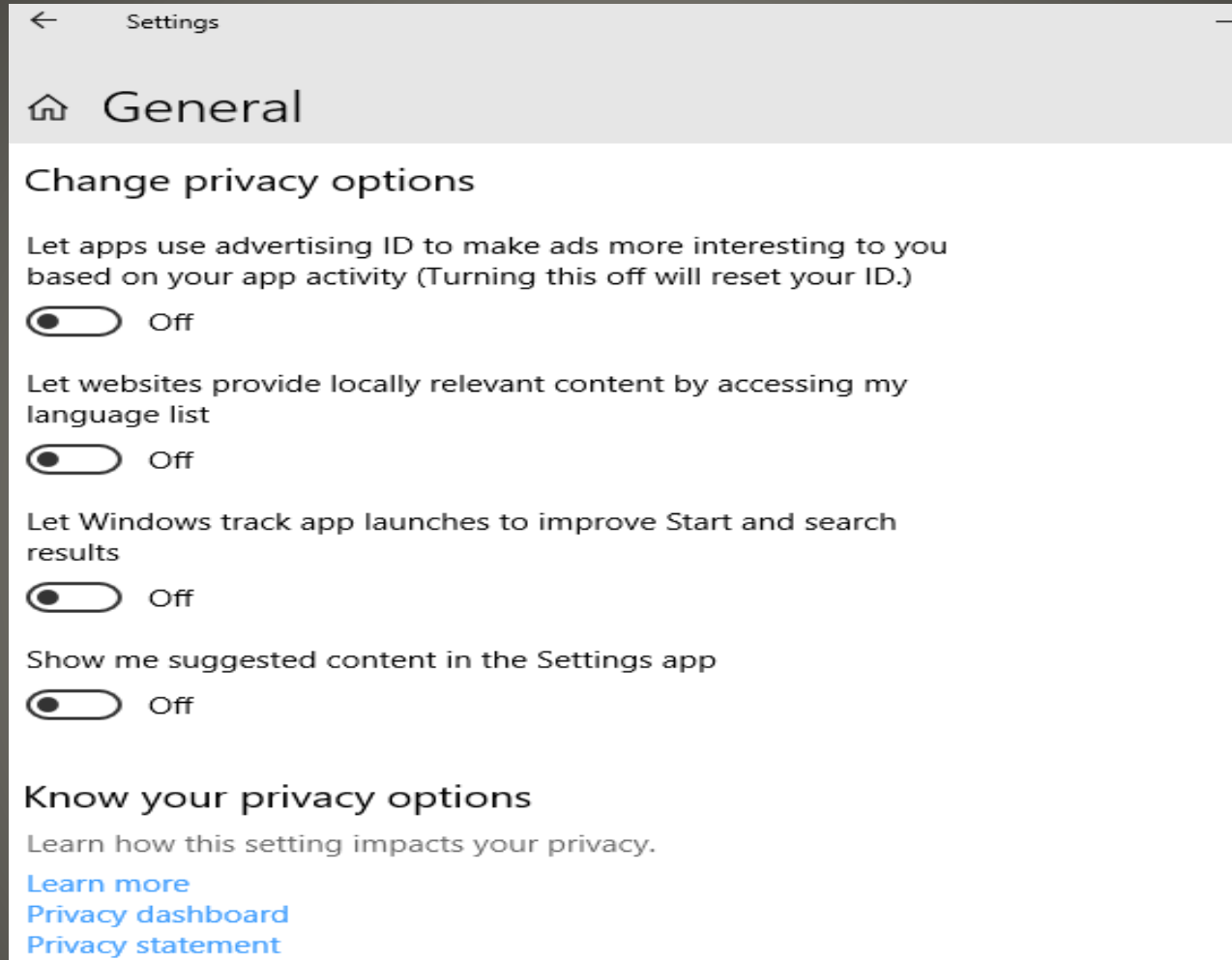
☐ Off

Update notifications

Show a notification when your PC requires a restart to finish updating

- Sunday, December 5, 2021
- Monday, December 6, 2021
- Tuesday, December 7, 2021
- Wednesday, December 8, 2021
- Thursday, December 9, 2021
- Friday, December 10, 2021
- Saturday, December 11, 2021
- Sunday, December 12, 2021
- Monday, December 13, 2021

ing installed on this device for up to 35 days. When you reach
d to get new updates before you can pause again.



Privacy Options

- Expired certificates

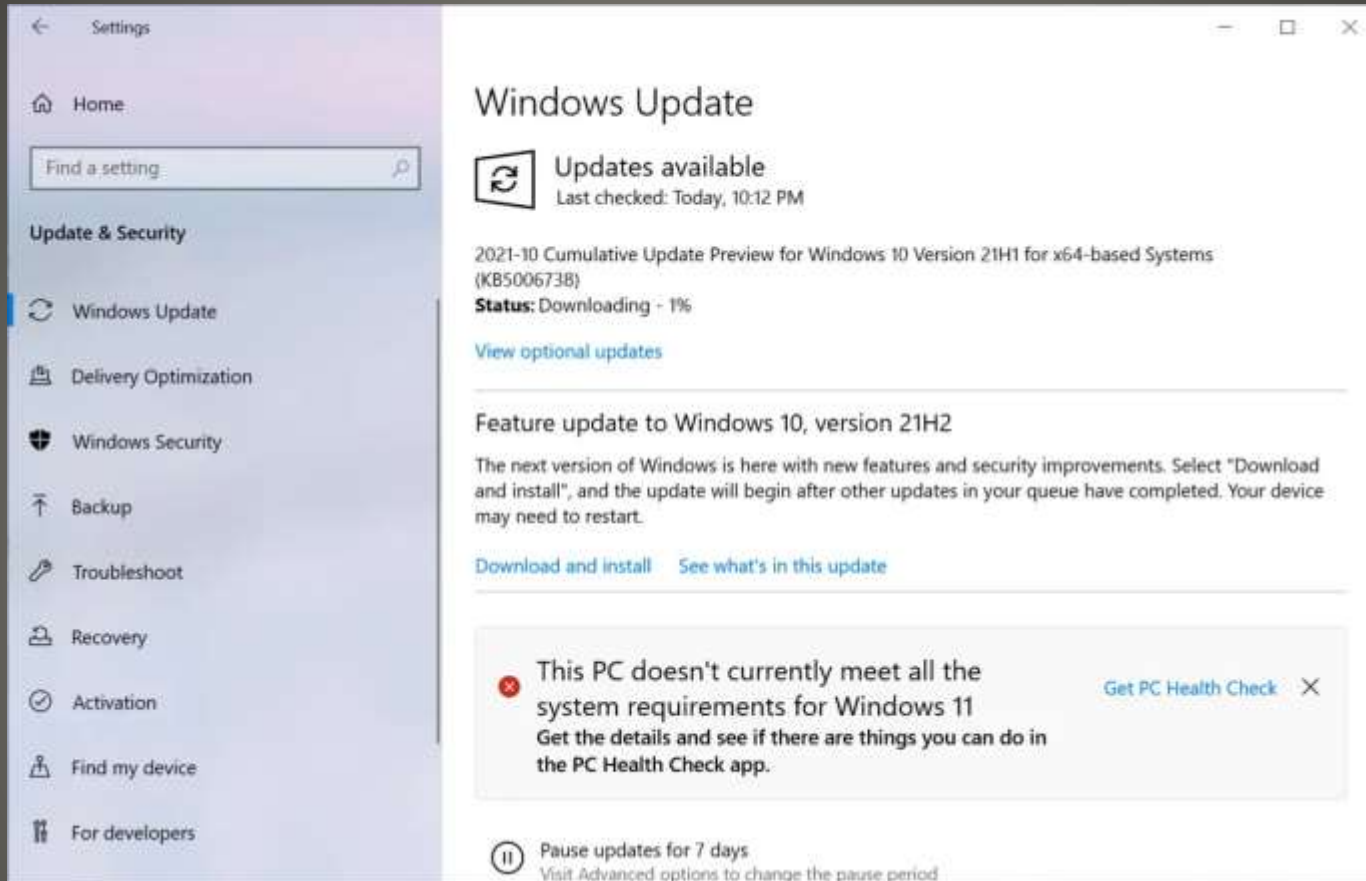
31-Oct-2021

Touch Keyboard, Voice Typing, Emoji picker, snipping tool

Build 22000.282 KB5006746

also fixes AMD Ryzen performance

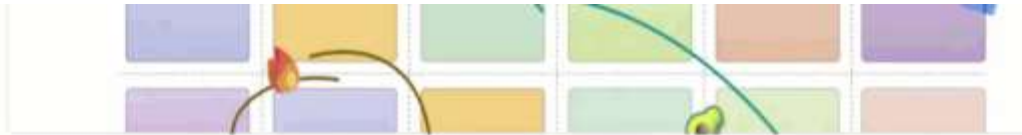
Windows 11



Windows 10 21H2

- Microsoft Library Update
- Stability
- Windows Hello – Enterprise
- Timeline no longer synchs activities
synchs local files and images

Windows 10 21H2



Marketing Ideas

1. Why Storytelling Matters. Storytelling brings our brand to life in powerful ways. Storytelling connects our hearts by revealing something about people, brands, products, and companies. I



2. Creative Principles. Our brand is crafted with care. Consistent expression unifies our experiences all around the world. It helps people recognize the VanArsdel brand and our family of connected



You

3. Collective Experiences. We aspire to be a brand that is authentic, inspiring, and relevant. We want to earn people's love, creating fans that will advocate on our behalf. And you play an important part in doing that. I

This is the one!! 🍷 Agreed 🍷

Serena

4. Personality. Our personality guides our behavior and creates the foundation for how we express ourselves. Understanding how we are - approachable, empathetic, determined, real, and passionate - influences how our brand



Kian

VanArsdel Marketing

Sales Opportunities

Budget and Financial Projection

Pricing Strategy

Marketing

Project Overview

Marketing Guidelines for V...

Weekly Brainstorm Meeting...

Creative Brief

Brainstorming

Alpine Ski House

Retrospective Retreat

Alpine Ski House (ID: 487...

Designs


Mood Board

Alpine Ski House Site Re...

User Research

Project Overview

Live



Project Overview

When technology communicates and behaves well, it enables you to do what you want to, on your terms. It communicates in ways that are not disruptive allowing you to focus. Focus is achieving the level of concentration you need to accomplish a task.

Important Stuff

Marketing Guidelines L...

Weekly Brainstorm Me...

Creative Brief

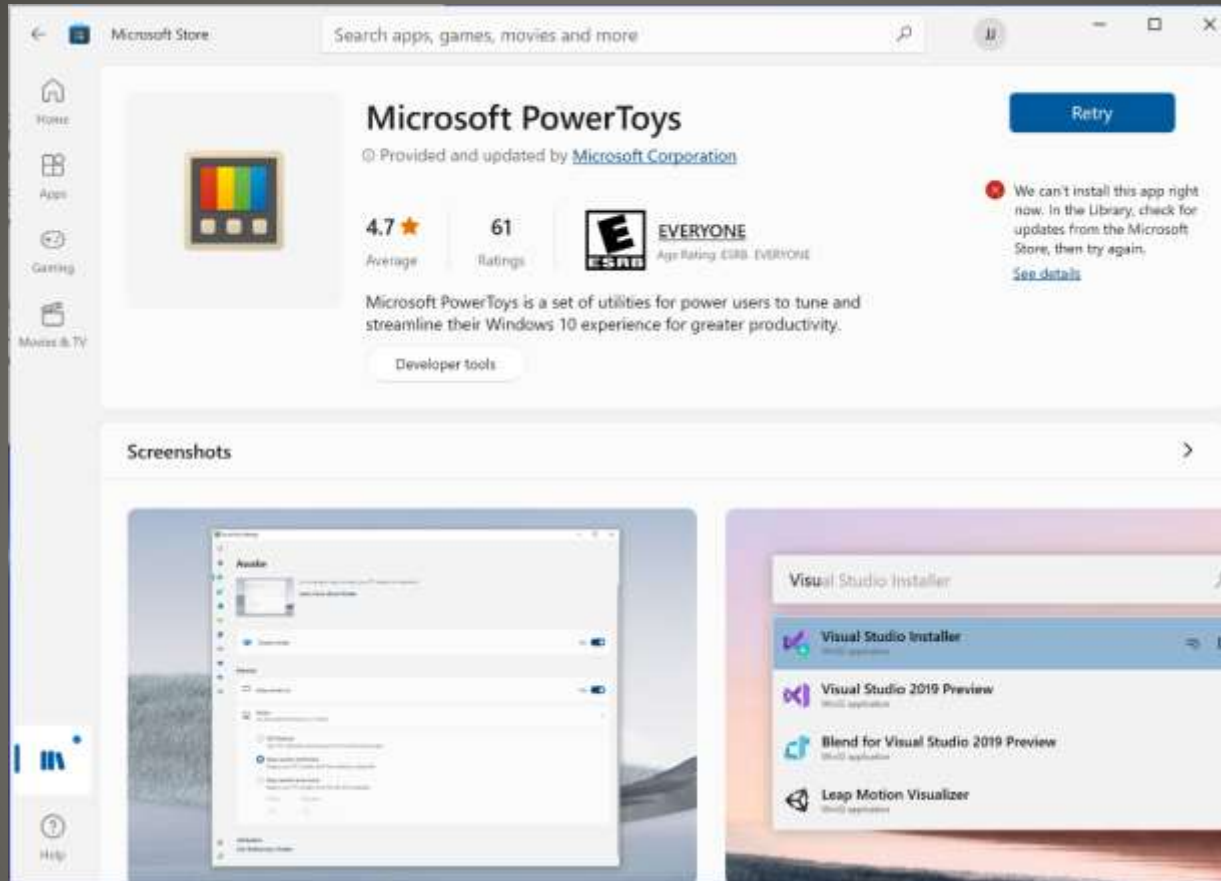


- Cumulative Update Preview KB5006738
10/27/2021 Windows 10 Version 21H1
- Cumulative Update Preview KB5006365
10/27/2021 .NET framework 3.5 & 4.8
- Cumulative Update Preview KB50066746
10/23/2021 Windows 11
- Cumulative Update Preview KB5006363
10/23/2021 .NET framework 3.5 & 4.8

Windows Update



Windows 10 21H2

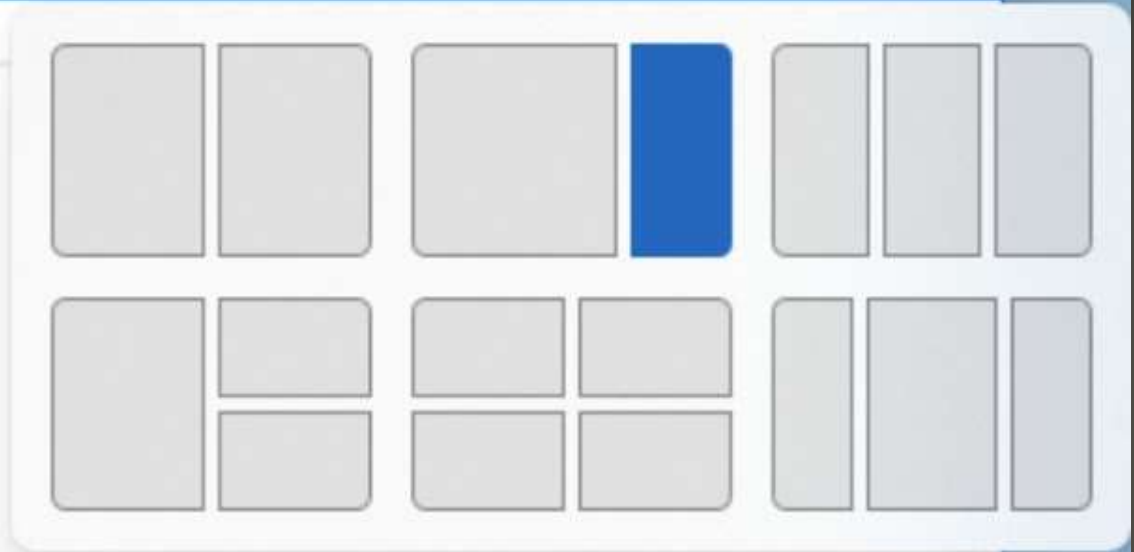


PowerToys

- Local Privilege Elevation Vulnerability
Proof of Concept releases
ALL windows versions
requires knowledge of another user's credentials

Untitled - Notepad

File Edit Format View



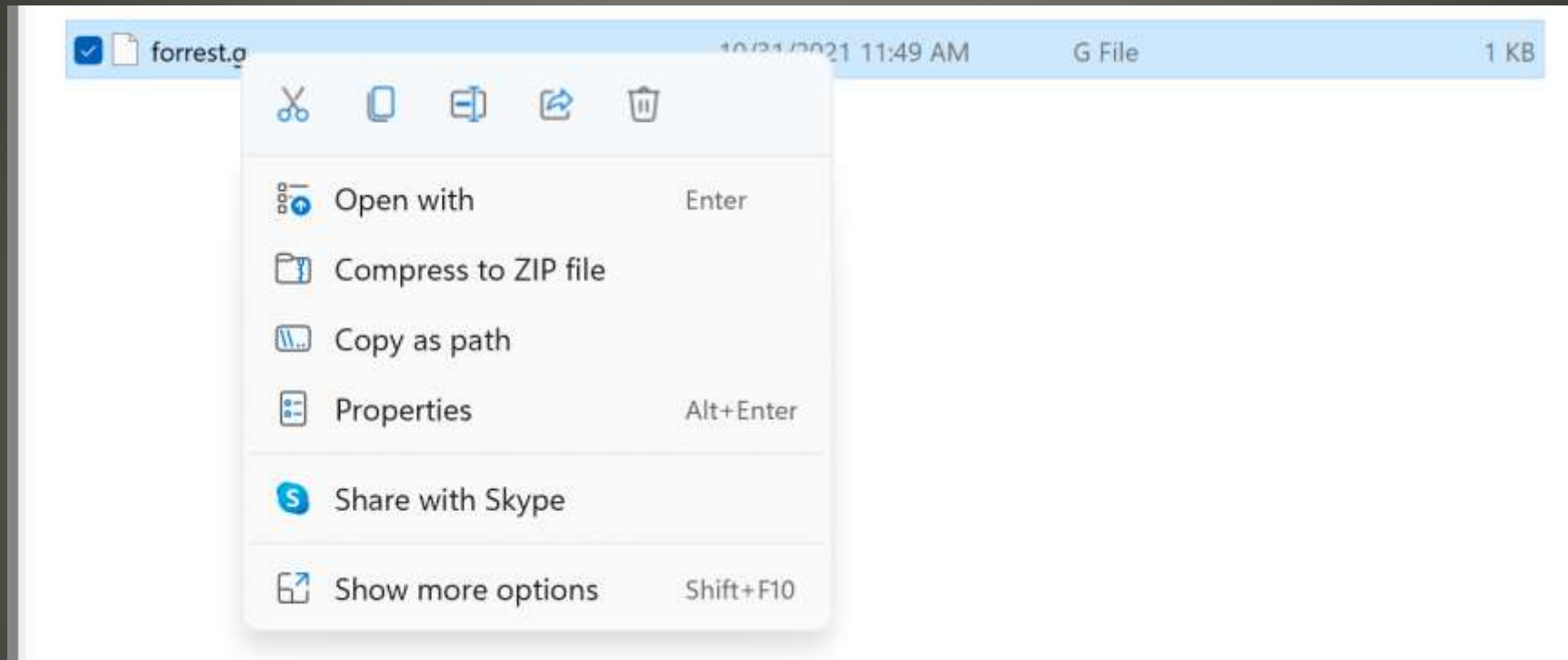
Multitasking features & Control

- Snap layouts
- Laptop & external display
- “Stay!”

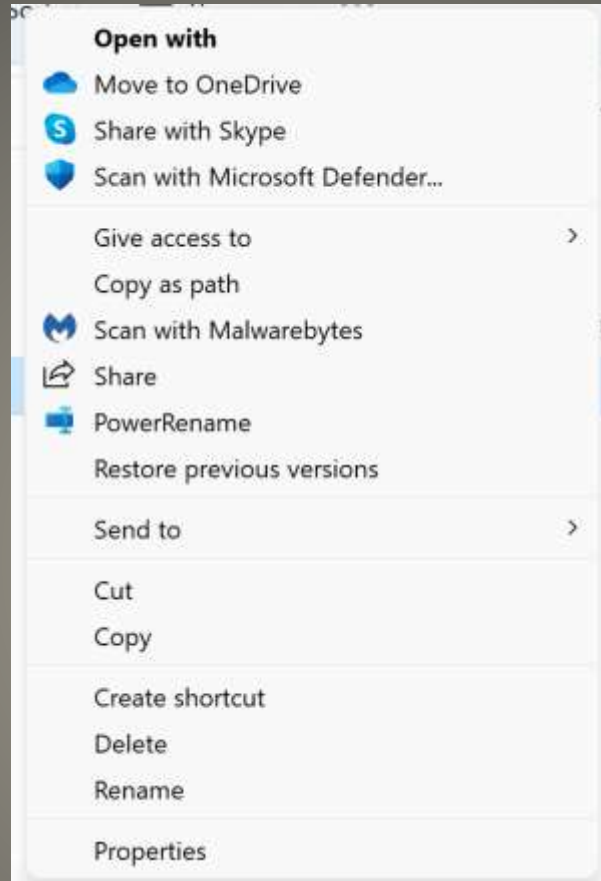
Multitasking

- Gadgets, popups, widgets, etc.
- Alarms & clock app
- 30 minutes
- More than 45 minutes – 5-minute breaks
- Android Forest app

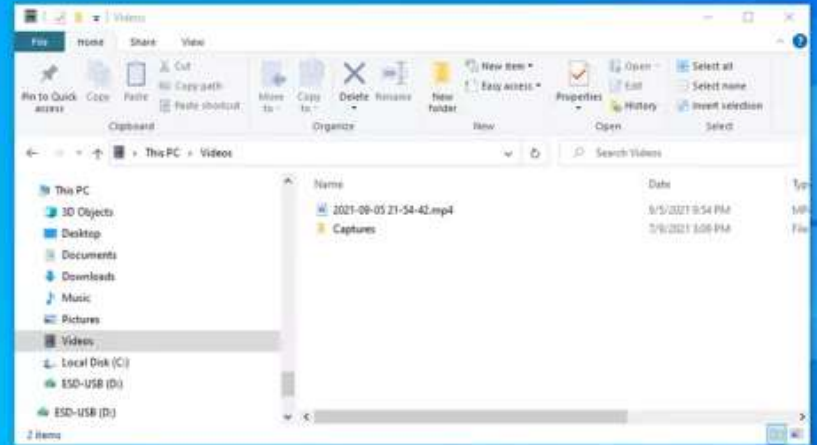
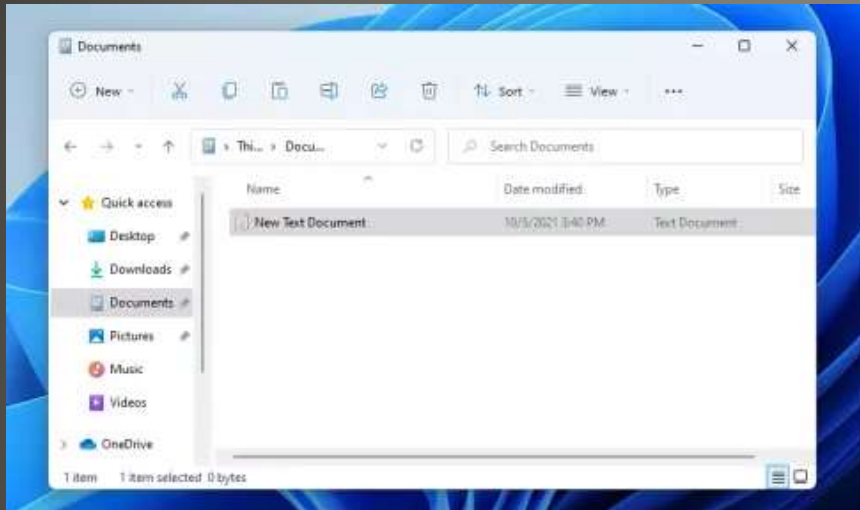
Focus



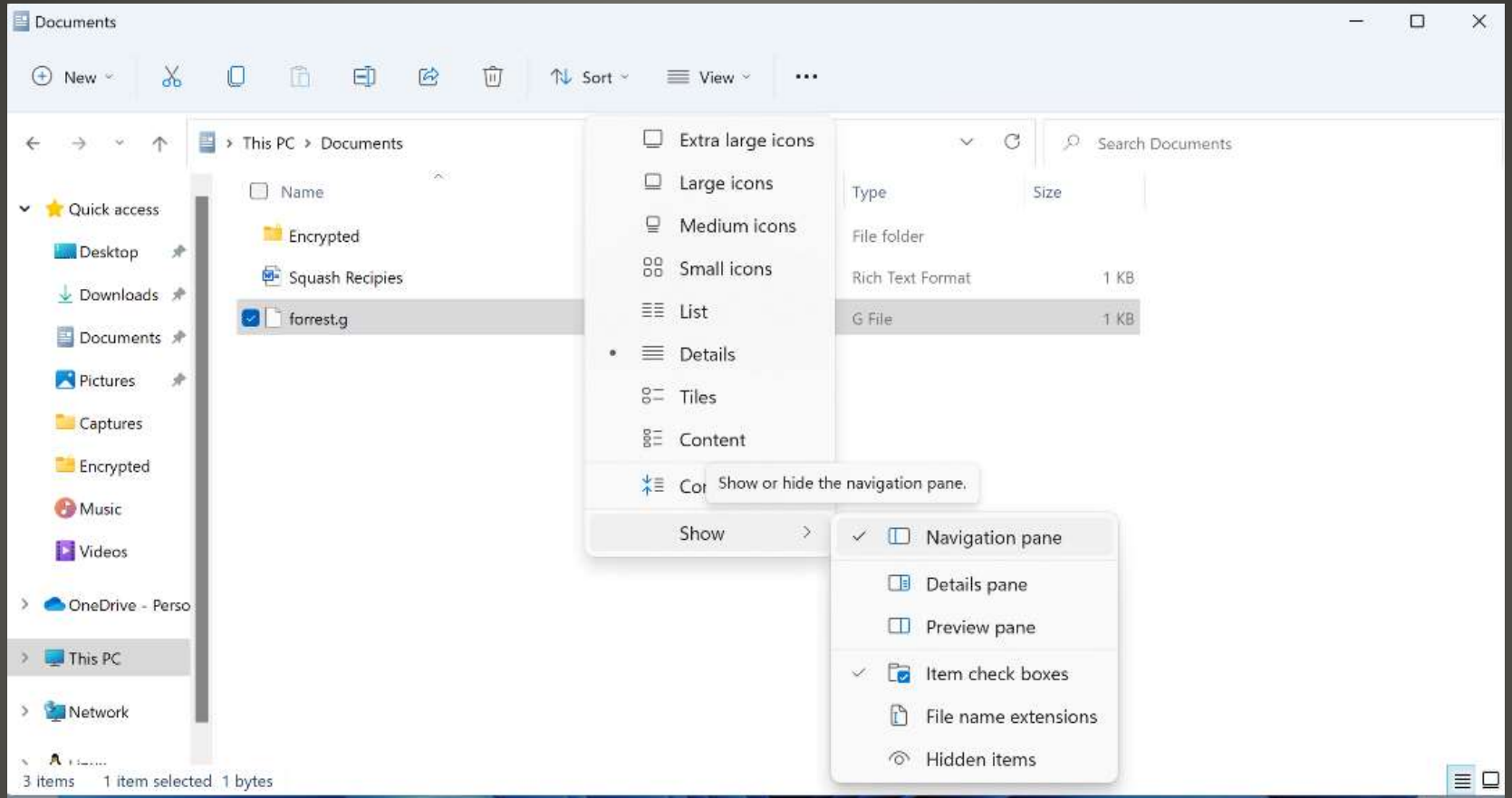
Windows 11 loss of options



The More Options



File Explorer Ribbon



Cleaner <-> Less Detail

- Still Version 21H1 19043.1288
- Windows 10 update 19043.1320

Windows 365

- Android

- Still

“This app will not work on your device”

Windows 11 Android Apps

- Windows 11 upgrade
- Windows 10 update v0.49.1

PowerToys

Clock

Focus sessions

Timers

Alarms

Stopwatch

World clock

Ready, set, focus!

Achieve your goals and get more done with focus sessions.
Tell us how much time you have, and we'll set up the rest.

30

mins

You'll have 1 break

☐ Skip break

▶ Start focus session

Tasks

Select a task for your session

☐ Update the marketing deck

☐ Finalize the weekly report

☐ Review the product spec

☐ Follow up with marketing on product naming

Daily progress

Yesterday

1.5

hrs

Daily goal

1.5

hrs

Completed: 23 mins

Spotify

Shortcuts



Chill Hits

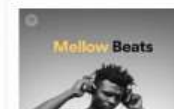
Kick back to the
best new and rece...



Relax & Unwind

Let your worries and
cares slip away.

Focus

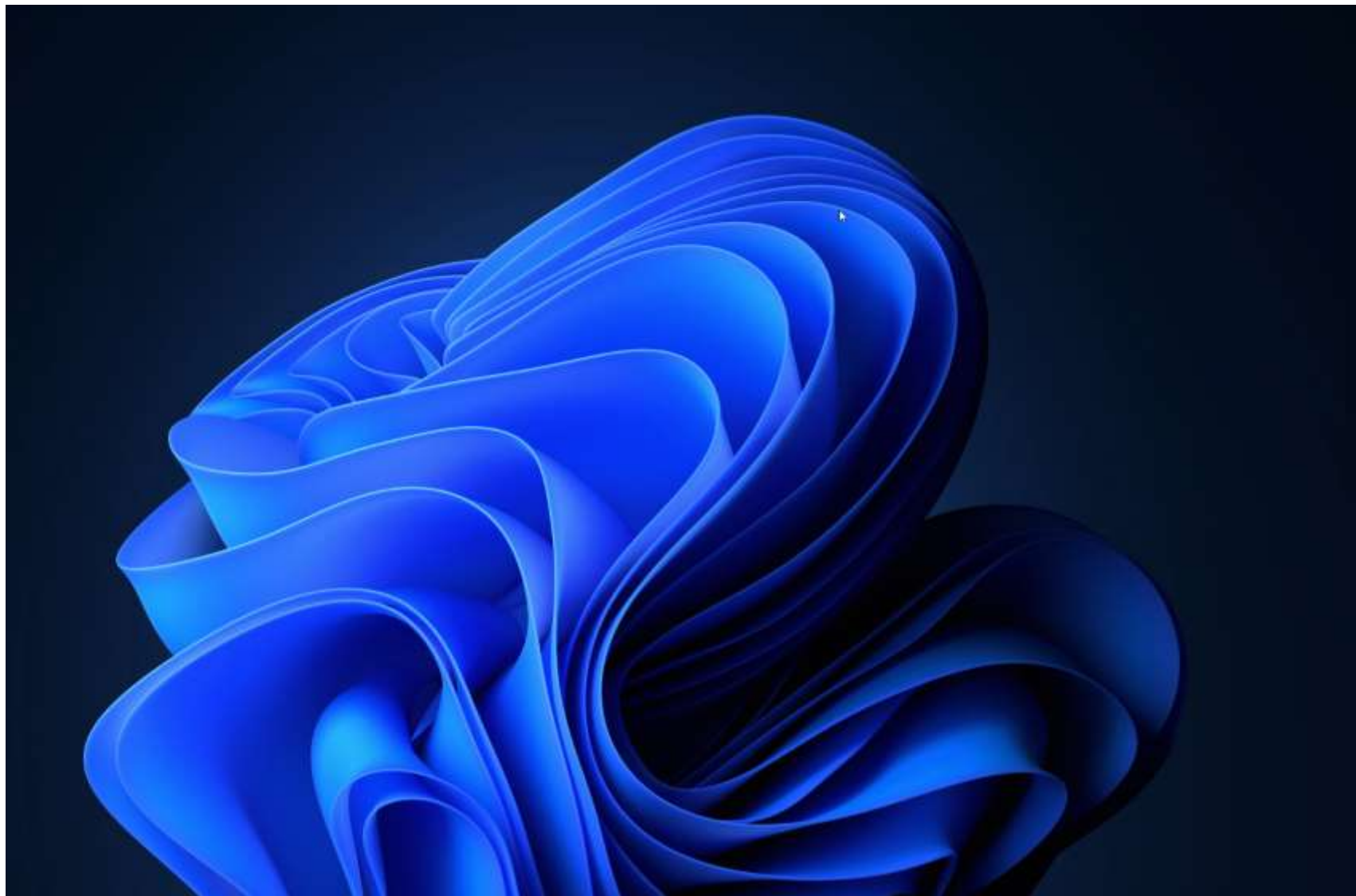


Mellow Beats



Soul Coffee

Focus



Accounts > Your Microsoft account

Your subscriptions



Microsoft 365 Family

Premium Office apps, OneDrive cloud storage, and more



Recurring billing

\$99.99 / Year

[See details](#)

You're sharing with

[Manage sharing](#)

78 GB used of 1 TB OneDrive storage

[Open OneDrive](#)

Next charge February 11, 2022 (\$99.99 plus applicable taxes)

[Manage](#)

See all your Microsoft 365 subscription benefits

[View benefits](#)

All subscriptions

Manage services and subscriptions from Microsoft



Related



Rewards

Earn and redeem points for using your favorite services and more



Payment options

Manage how you pay for purchases with your Microsoft account



Order history



System

Bluetooth & devices

Network & internet

Personalization

Apps

Accounts

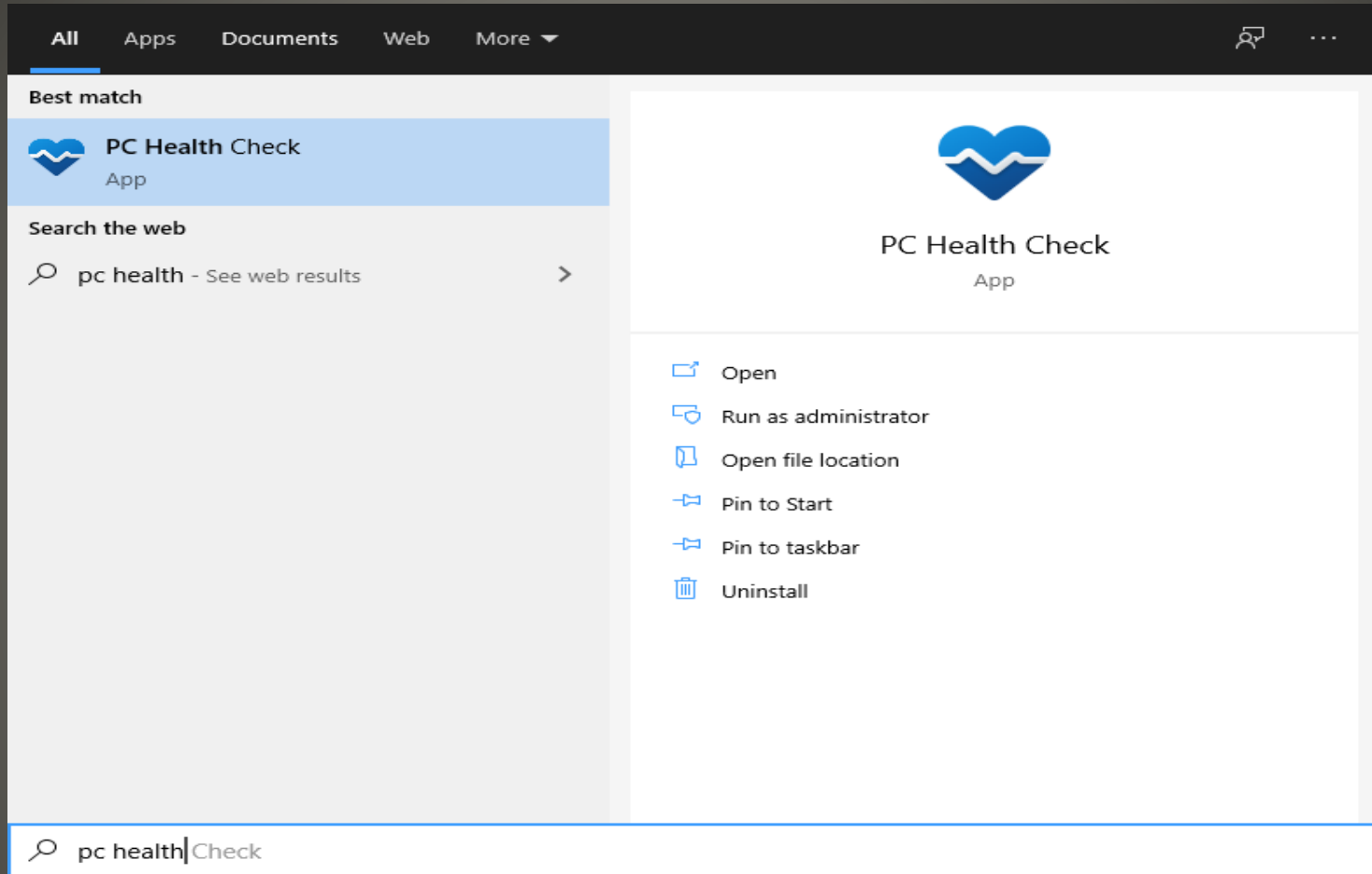
Time & language

Gaming

Accessibility

Privacy & security

Windows Update

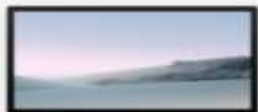


PC Health Check App

- KB5005463

PC Health Check App

PC health at a glance



16 GB RAM
1000 GB SSD
4 years old

[Rename your PC](#)

Introducing Windows 11

Let's check if this PC meets the system requirements.
If it does, you can get the free upgrade when it's available.

[Check now](#)



Backup & sync



Windows Update

Last checked: Sunday 11:33 AM



Storage capacity

69% full



Startup time

See details



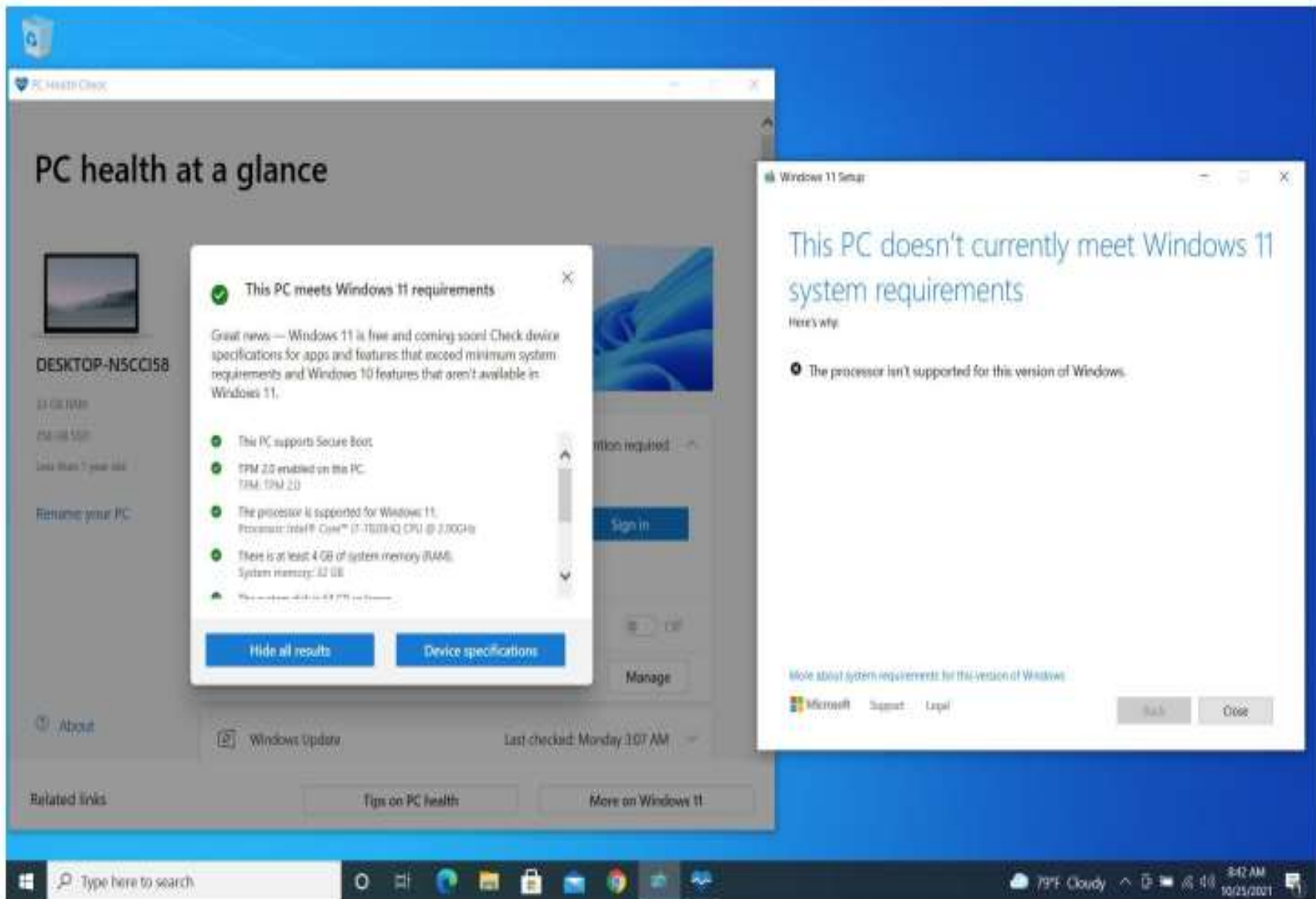
[? About](#)

[Learn more about your
device in the HP Support
Assistant App](#)

Related links

[Tips on PC health](#)

[More on Windows 11](#)



- Microsoft 365 integration
- Default browser

Edge getting pushy

November 5, 2021—KB5008295 Out-of-band

Windows 11

For information about Windows update terminology, see the article about the [types of Windows updates](#) and the [monthly quality update types](#). For an overview of Windows 11 (original release), see its [update history page](#).

Note Follow [@WindowsUpdate](#) to find out when new content is published to the Windows release health dashboard.

Highlights

- Updates a known issue that might prevent some of you from opening or using certain built-in Windows apps, such as the Snipping Tool, the Emoji Panel, or the Touch Keyboard.

Improvements and fixes

This non-security update includes quality improvements. Key changes include:

- Addresses a known issue that might prevent some users from opening or using certain built-in Windows apps or parts of some built-in apps. This issue occurs because of a Microsoft digital certificate that expired October 31, 2021. This issue

- Application Logs, Dump files, Crash logs

Problem Determination

All Apps Documents Web More ▾



Best match



Event Viewer
App

Search the web



event - See web results



Documents (1+)



Event Viewer
App



Open



Run as administrator



Open file location



Pin to Start



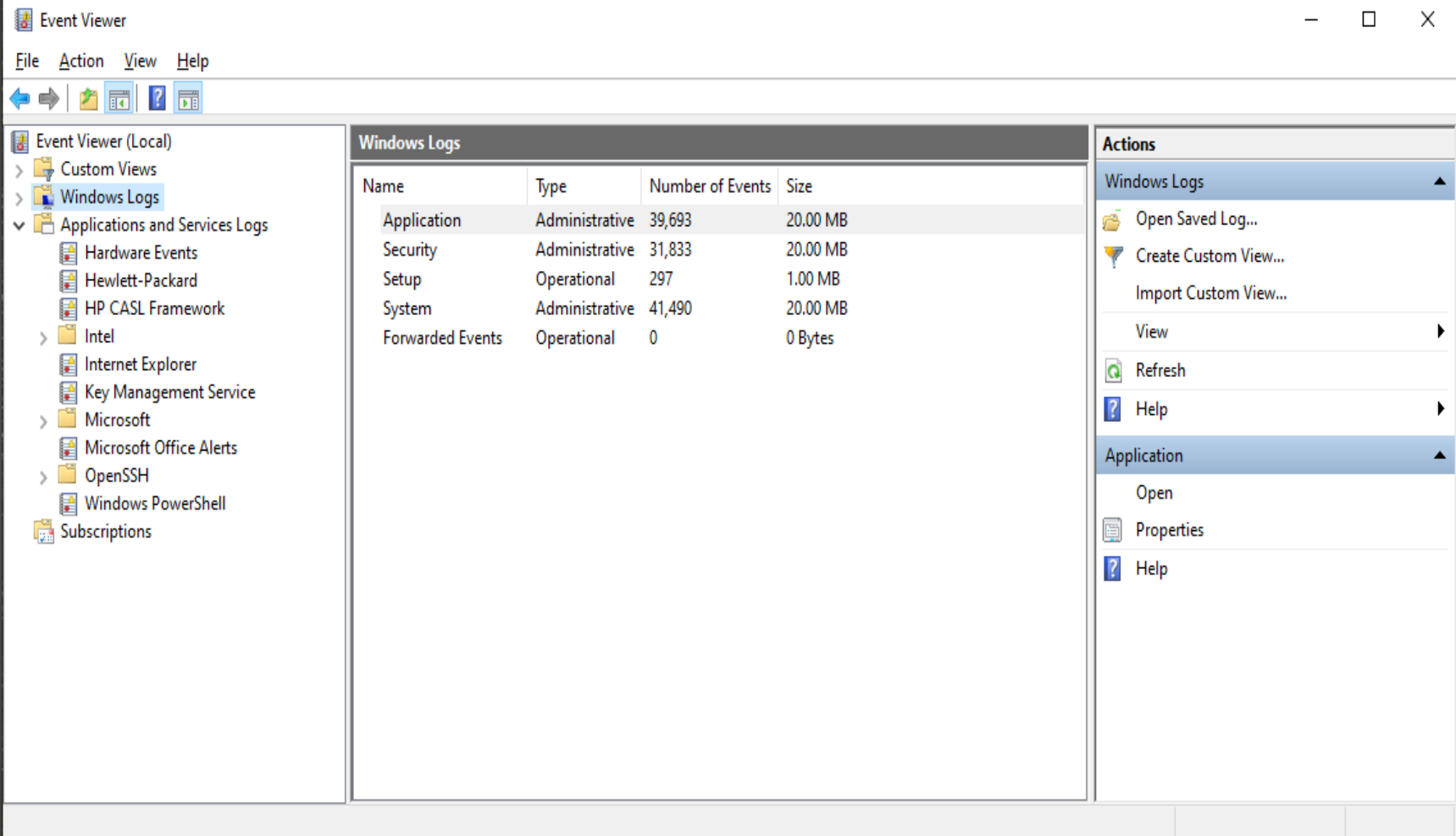
Pin to taskbar

Event Viewer

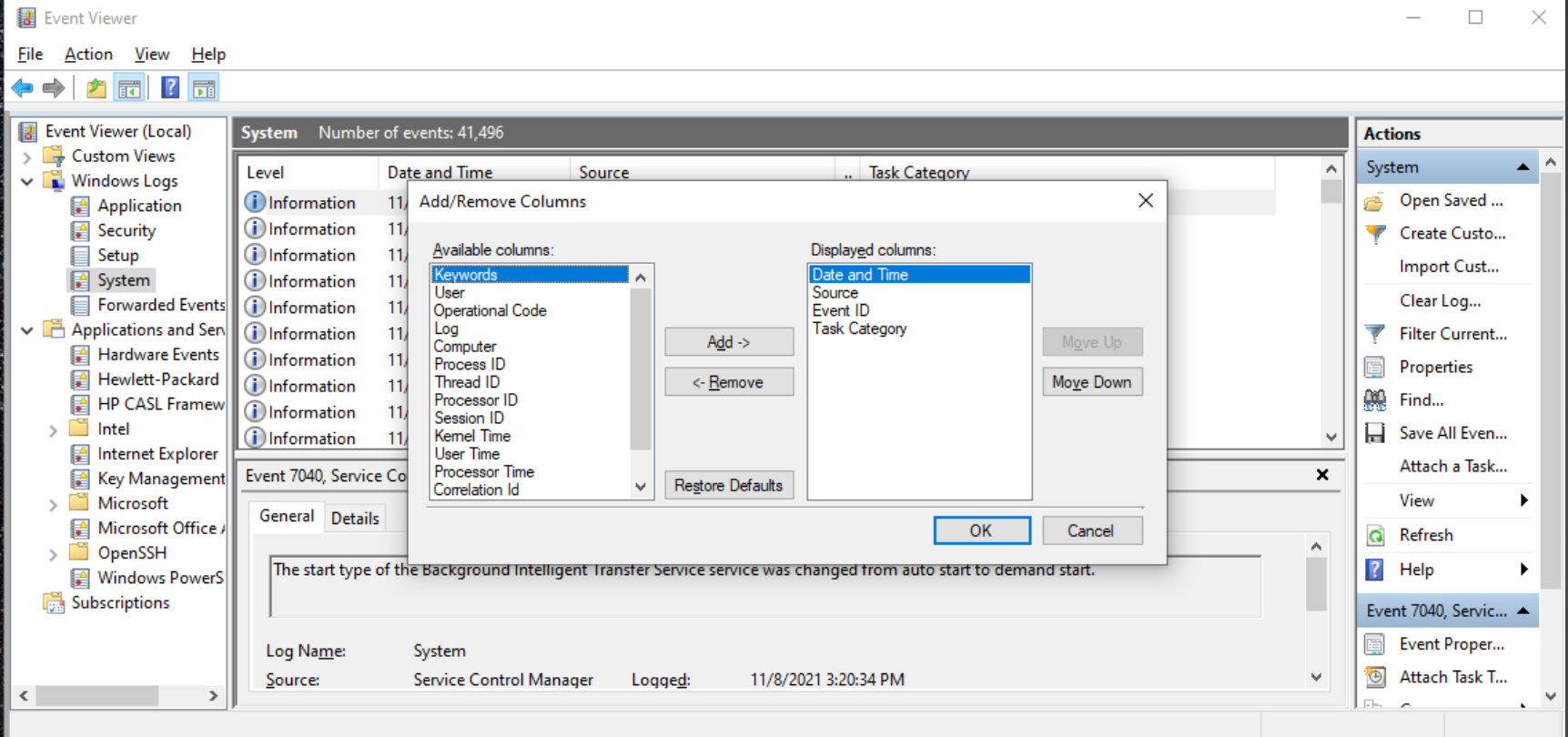
- User Access Control screen



Please



Event Viewer



Add or Remove columns

Event Viewer

File Action View Help

Event Viewer (Local)

- Custom Views
- Windows Logs
 - Application
 - Security
 - Setup
 - System
 - Forwarded Events
- Applications and Services Logs
 - Hardware Events
 - Hewlett-Packard
 - HP CASL Framework
 - Intel
 - Internet Explorer
 - Key Management
 - Microsoft
 - Microsoft Office
 - OpenSSH
 - Windows PowerShell
 - Subscriptions

System Number of events: 41,496

Level	Date and Time	Source	ID	Task Category
Information	11/8/2021 2:41:46 PM	Service Control Manager	7	None
Information	11/8/2021 2:29:52 PM	Service Control Manager	7	None
Information	11/8/2021 2:26:34 PM	Service Control Manager	7	None
Information	11/8/2021 1:28:53 PM	Service Control Manager	7	None
Information	11/8/2021 1:26:24 PM	Service Control Manager	7	None
Information	11/8/2021 12:05:03 PM	Service Control Manager	7	None
Information	11/8/2021 12:02:34 PM	Service Control Manager	7	None

Event 7040, Service Control Manager

General Details

The start type of the Background Intelligent Transfer Service service was changed from auto start to demand start.

Log Name: System
Source: Service Control Manager Logged: 11/8/2021 3:20:34 PM

Actions

- System
- Open Saved ...
- Create Custo...
- Import Cust...
- Clear Log...
- Filter Current...
- Properties
- Find...
- Save All Even...
- Attach a Task...
- View
- Refresh
- Help
- Event 7040, Servic...
- Event Proper...
- Attach Task T...

Sort

Event Viewer

File Action View Help

Event Viewer (Local)

- Custom Views
- Windows Logs
 - Application
 - Security
 - Setup
 - System
 - Forwarded Events
- Applications and Services Logs
 - Hardware Events
 - Hewlett-Packard
 - HP CASL Framework
 - Intel
 - Internet Explorer
 - Key Management
 - Microsoft
 - Microsoft Office
 - OpenSSH
 - Windows PowerShell
 - Subscriptions

System Number of events: 41,496

Level	Date and Time	Source	E	Task Category
Critical	10/15/2020 10:37:44 PM	Kernel-Power	4 (63)	
Critical	7/30/2021 4:17:35 PM	Kernel-Power	4 (63)	
Critical	3/24/2021 10:18:44 AM	DriverFrameworks-UserMode	1	User-mode Driver problems.
Critical	9/27/2020 10:28:38 AM	DriverFrameworks-UserMode	1	User-mode Driver problems.
Critical	6/26/2021 1:48:16 PM	Kernel-Power	4 (63)	
Critical	9/27/2020 10:28:38 AM	DriverFrameworks-UserMode	1	User-mode Driver problems.
Critical	5/16/2021 1:42:58 PM	DriverFrameworks-UserMode	1	User-mode Driver problems.
Critical	8/18/2021 4:44:16 PM	Kernel-Power	4 (63)	
Critical	11/6/2021 11:26:53 AM	Kernel-Power	4 (63)	
Critical	5/16/2021 1:42:58 PM	DriverFrameworks-UserMode	1	User-mode Driver problems.

Event 7040, Service Control Manager

General Details

The start type of the Background Intelligent Transfer Service service was changed from auto start to demand start.

Log Name: System

Source: Service Control Manager Logged: 11/8/2021 3:20:34 PM

Actions

- System
- Open Saved ...
- Create Custo...
- Import Cust...
- Clear Log...
- Filter Current...
- Properties
- Find...
- Save All Even...
- Attach a Task...
- View
- Refresh
- Help
- Event 7040, Servic...
- Event Proper...
- Attach Task T...

Sort Level

Event Viewer

File Action View Help

Event Viewer (Local)

- Custom Views
- Windows Logs
 - Application
 - Security
 - Setup
 - System
 - Forwarded Events
- Applications and Services Logs
 - Hardware Events
 - Hewlett-Packard
 - HP CASL Framework
 - Intel
 - Internet Explorer
 - Key Management
 - Microsoft
 - Microsoft Office
 - OpenSSH
 - Windows PowerShell
 - Subscriptions

System Number of events: 41,496

Level	Date and Time	Source	E	Task Category
Information	11/8/2021 3:20:34 PM	Service Control Manager	7	None
Information	11/8/2021 3:18:28 PM	Service Control Manager	7	None
Information	11/8/2021 2:43:50 PM	Service Control Manager	7	None
Information	11/8/2021 2:41:46 PM	Service Control Manager	7	None
Information	11/8/2021 2:29:52 PM	Service Control Manager	7	None
Information	11/8/2021 2:26:34 PM	Service Control Manager	7	None
Information	11/8/2021 1:28:53 PM	Service Control Manager	7	None
Information	11/8/2021 1:26:24 PM	Service Control Manager	7	None
Information	11/8/2021 12:05:03 PM	Service Control Manager	7	None
Information	11/8/2021 12:02:34 PM	Service Control Manager	7	None

Event 7040, Service Control Manager

General Details

The start type of the Background Intelligent Transfer Service service was changed from auto start to demand start.

Log Name: System

Source: Service Control Manager Logged: 11/8/2021 3:20:34 PM

Actions

- System
- Open Saved ...
- Create Custo...
- Import Cust...
- Clear Log...
- Filter Current...
- Properties
- Find...
- Save All Even...
- Attach a Task...
- View
- Refresh
- Help
- Event 7040, Servic...
- Event Proper...
- Attach Task T...

Sort Date & Time

Event Viewer

File Action View Help

Event Viewer (Local)

- Custom Views
- Windows Logs
 - Application
 - Security
 - Setup
 - System
 - Forwarded Events
- Applications and Services Logs
 - Hardware Events
 - Hewlett-Packard
 - HP CASL Framework
 - Intel
 - Internet Explorer
 - Key Management
 - Microsoft
 - Microsoft Office
 - OpenSSH
 - Windows PowerShell
 - Subscriptions

System Number of events: 41,496

Level	Date and Time	Source	ID	Task Category
Critical	7/30/2021 4:17:35 PM	Kernel-Power	4	(63)
Critical	3/24/2021 10:18:44 AM	DriverFrameworks-UserMode	1	User-mode Driver problems.
Critical	9/27/2020 10:28:38 AM	DriverFrameworks-UserMode	1	User-mode Driver problems.
Critical	6/26/2021 1:48:16 PM	Kernel-Power	4	(63)
Critical	9/27/2020 10:28:38 AM	DriverFrameworks-UserMode	1	User-mode Driver problems.
Critical	5/16/2021 1:42:58 PM	DriverFrameworks-UserMode	1	User-mode Driver problems.

Event 10116, DriverFrameworks-UserMode

General Details

The device Apple Mobile Device USB Device (location 0000.0014.0000.010.001.000.000.000.000) is offline due to a user-mode driver crash. Windows will attempt to restart the device in the shared process 1 more times before moving the device in its own process. Please contact the device manufacturer for more information about this problem.

Log Name: System

Source: DriverFrameworks-UserMode

Event ID: 10116

Level: Critical

User: SYSTEM

QpCode: Info

More Information: [Event Log Online Help](#)

Logged: 3/24/2021 10:18:44 AM

Task Category: User-mode Driver problems.

Keywords:

Computer: DESKTOP-VQQR2K

Actions

- System
- Open Saved Log...
- Create Custom ...
- Import Custom ...
- Clear Log...
- Filter Current Lo...
- Properties
- Find...
- Save All Events ...
- Attach a Task To...
- View
- Refresh
- Help
- Event 10116, DriverFr...
- Event Properties
- Attach Task To T...
- Copy
- Save Selected Ev...
- Refresh
- Help

Event Viewer Detail

Event Viewer

File Action View Help

Event Viewer (Local)

- Custom Views
- Windows Logs
 - Application
 - Security
 - Setup
 - System
- Forwarded Events
- Applications and Services Logs
 - Hardware Events
 - Hewlett-Packard
 - HP CASL Framework
 - Intel
 - Internet Explorer
 - Key Management
 - Microsoft
 - Microsoft Office
 - OpenSSH
 - Windows PowerShell
 - Subscriptions

System Number of events: 41,496

Level	Date and Time	Source	E	Task Category
Critical	7/30/2021 4:17:35 PM	Kernel-Power	4 (63)	
Critical	3/24/2021 10:18:44 AM	DriverFrameworks-UserMode	1	User-mode Driver problems.
Critical	9/27/2020 10:28:38 AM	DriverFrameworks-UserMode	1	User-mode Driver problems.
Critical	6/26/2021 1:48:16 PM	Kernel-Power	4 (63)	
Critical	9/27/2020 10:28:38 AM	DriverFrameworks-UserMode	1	User-mode Driver problems.
Critical	5/16/2021 1:42:58 PM	DriverFrameworks-UserMode	1	User-mode Driver problems.

Event 10116, DriverFrameworks-UserMode

General Details

☒ Friendly View ☐ XML View

- System

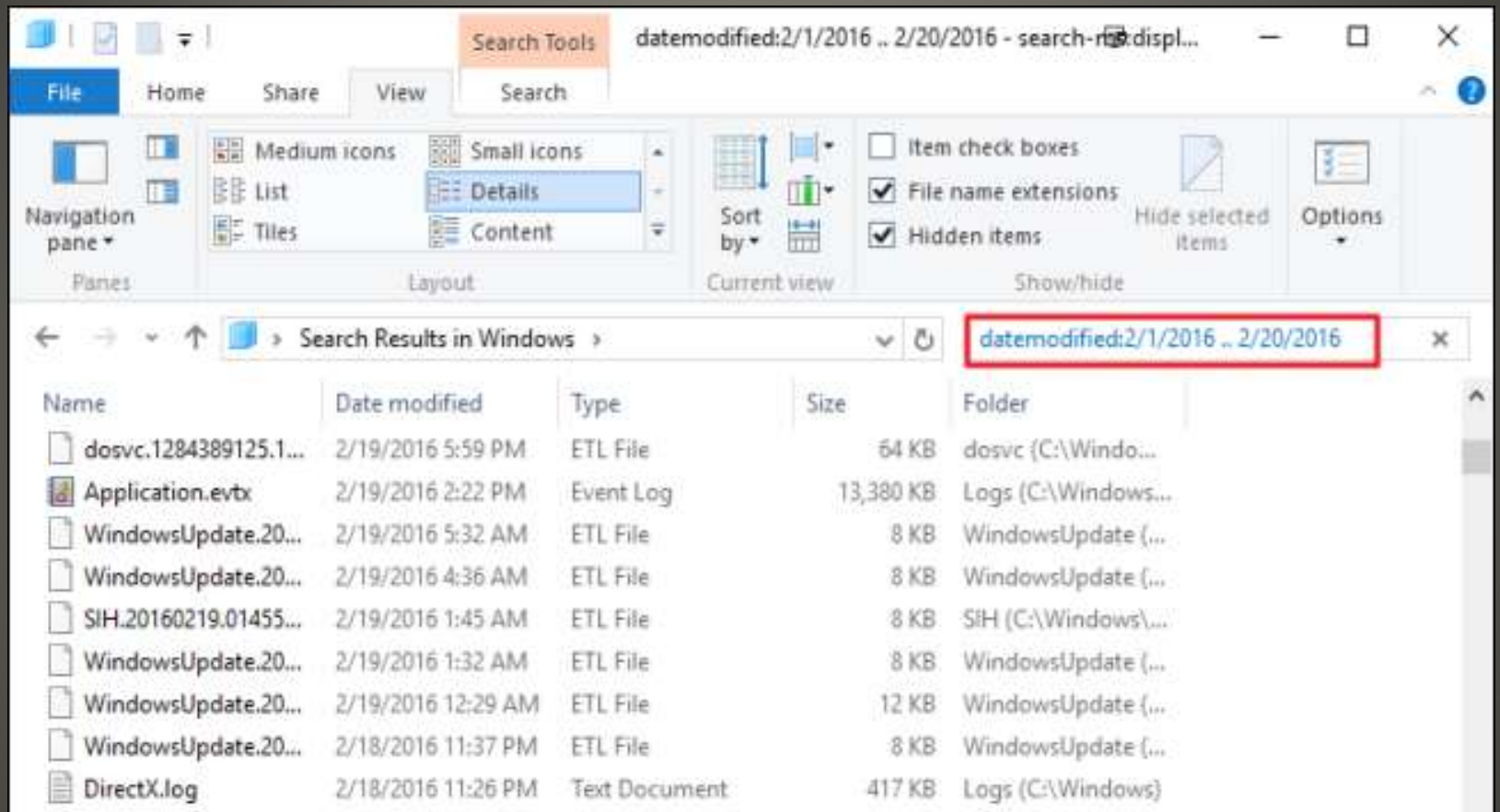
- Provider
 - [Name] Microsoft-Windows-DriverFrameworks-UserMode
 - [Guid] {2e35aeb-857f-4beb-a418-2e6c0e54d988}
- EventID 10116
- Version 1
- Level 1
- Task 64
- Opcode 0
- Keywords 0x2000000000000000

Contains commands for customizing this window.

Actions

- System
 - Open Saved Log...
 - Create Custom ...
 - Import Custom ...
 - Clear Log...
 - Filter Current Lo...
 - Properties
 - Find...
 - Save All Events ...
 - Attach a Task To...
- View
 - Refresh
 - Help
- Event 10116, DriverFr...
 - Event Properties
 - Attach Task To T...
 - Copy
 - Save Selected Ev...
 - Refresh
 - Help

Event Viewer



Search Application logs

- Datecreated:11/2/2021..11/3/2021

File Explorer

- None of us are as experienced as all of us
- Awareness, Preparedness, Understanding
- Participate
- Topic Suggestions
- Questions: scccwindows@gmail.com

