

Sun City Computer Club

Windows SIG

November 12 2019

**Questions, Comments, Suggestions welcomed at
any time**

Even Now

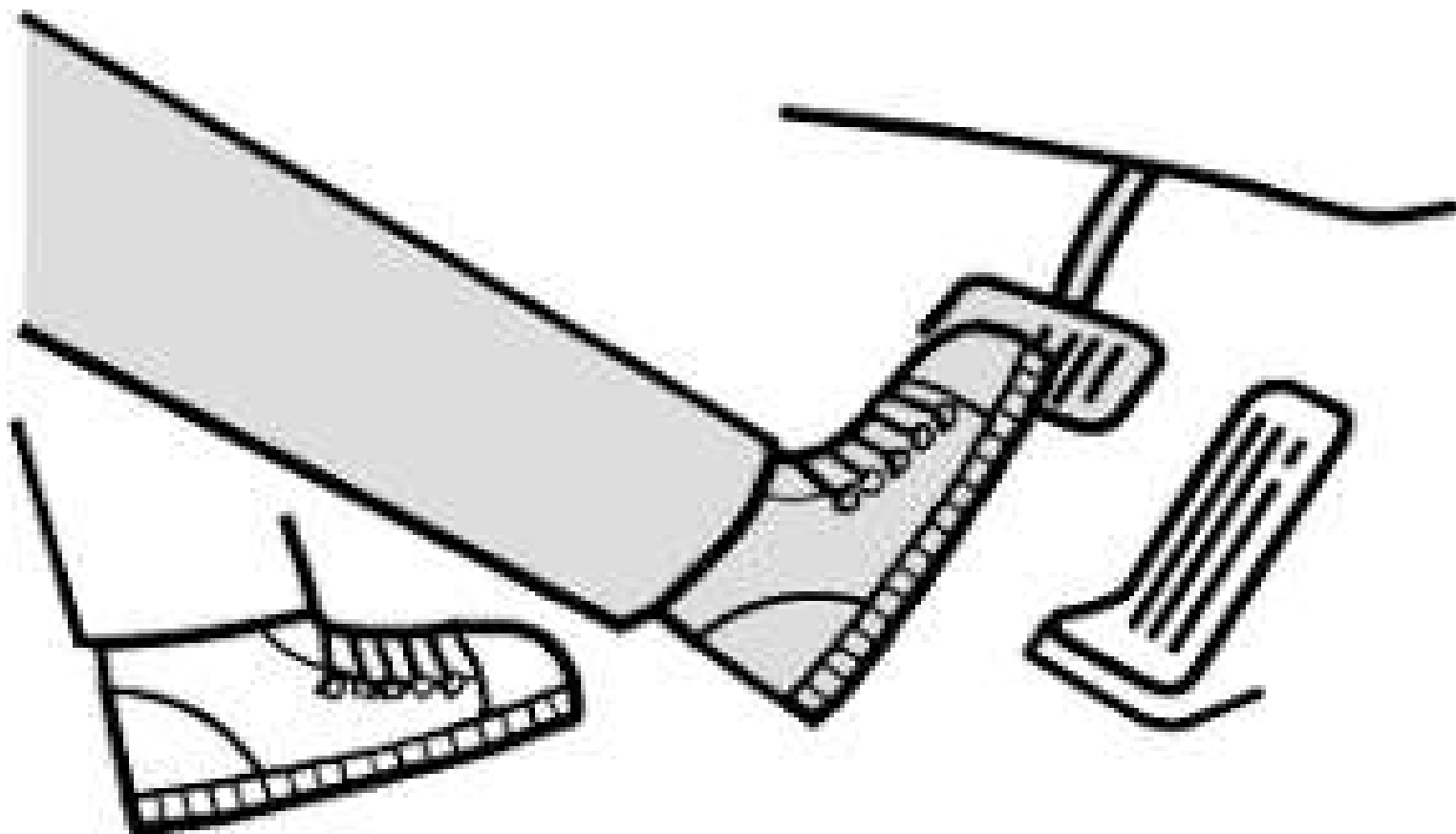
- Audio Recording of this session
- Audio Recording in Progress
- SIG attendees are required to be members of the chartered club sponsoring that SIG.
- Sun City Community Association By-law

- Your input is desired, needed, requested,
- 2020 meeting schedule – Annex
- SIG leader?
- Last Retreat scheduled Windows SIG meeting

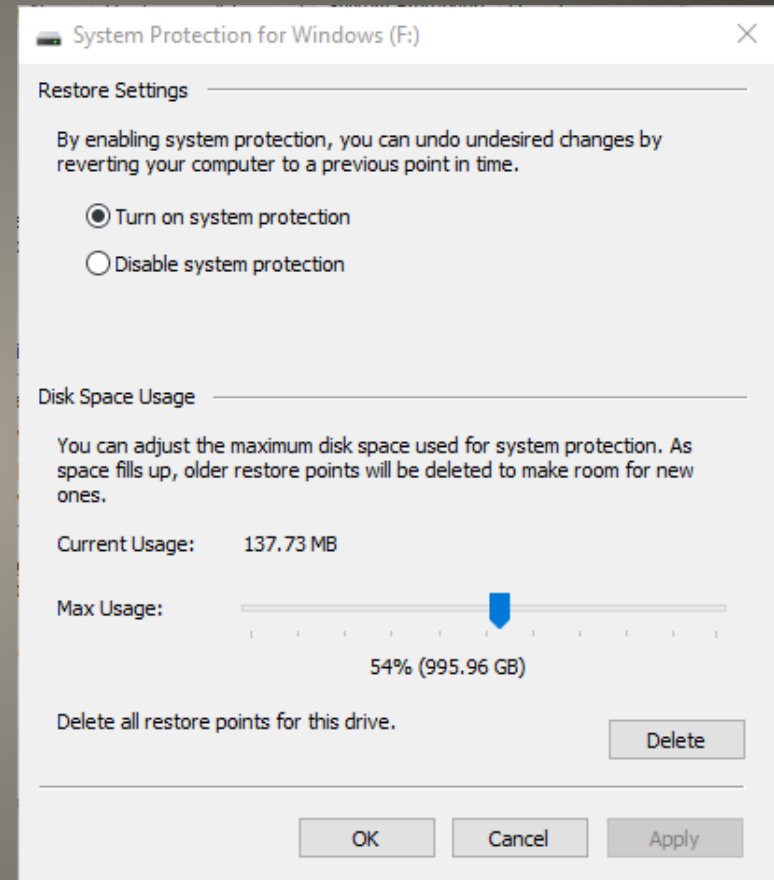
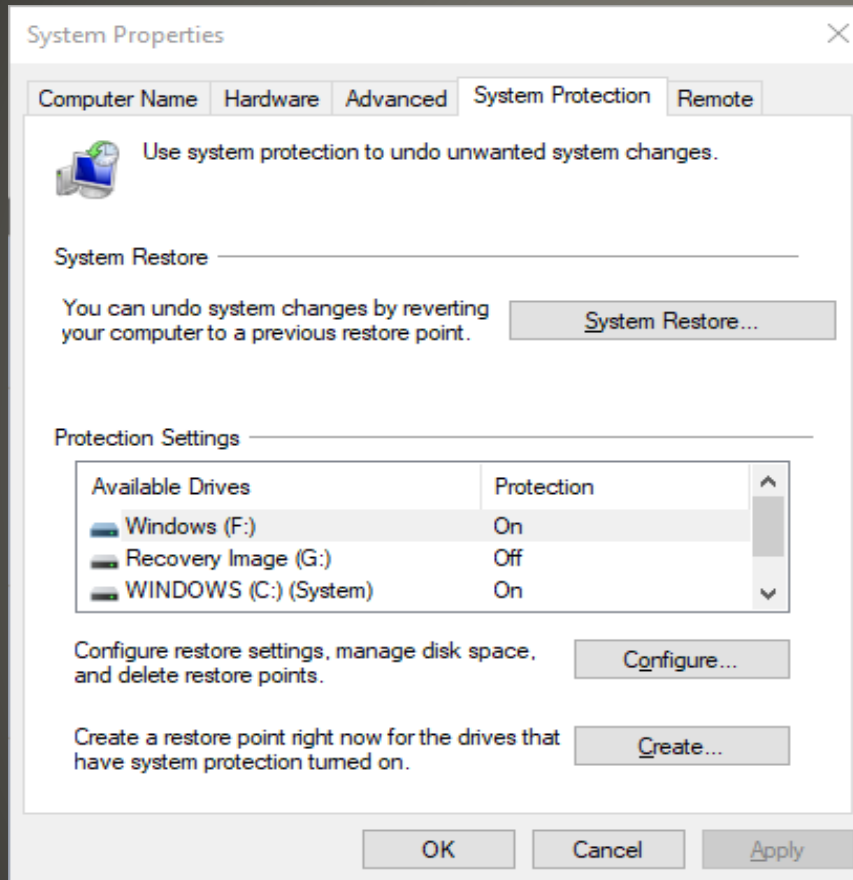
Windows SIG news

- January 2020 Windows 7 Pro support
- Windows vs MacOS 32bit apps
- Windows 10 November 2019 *Update*
- 19H2 1909
- Twice yearly

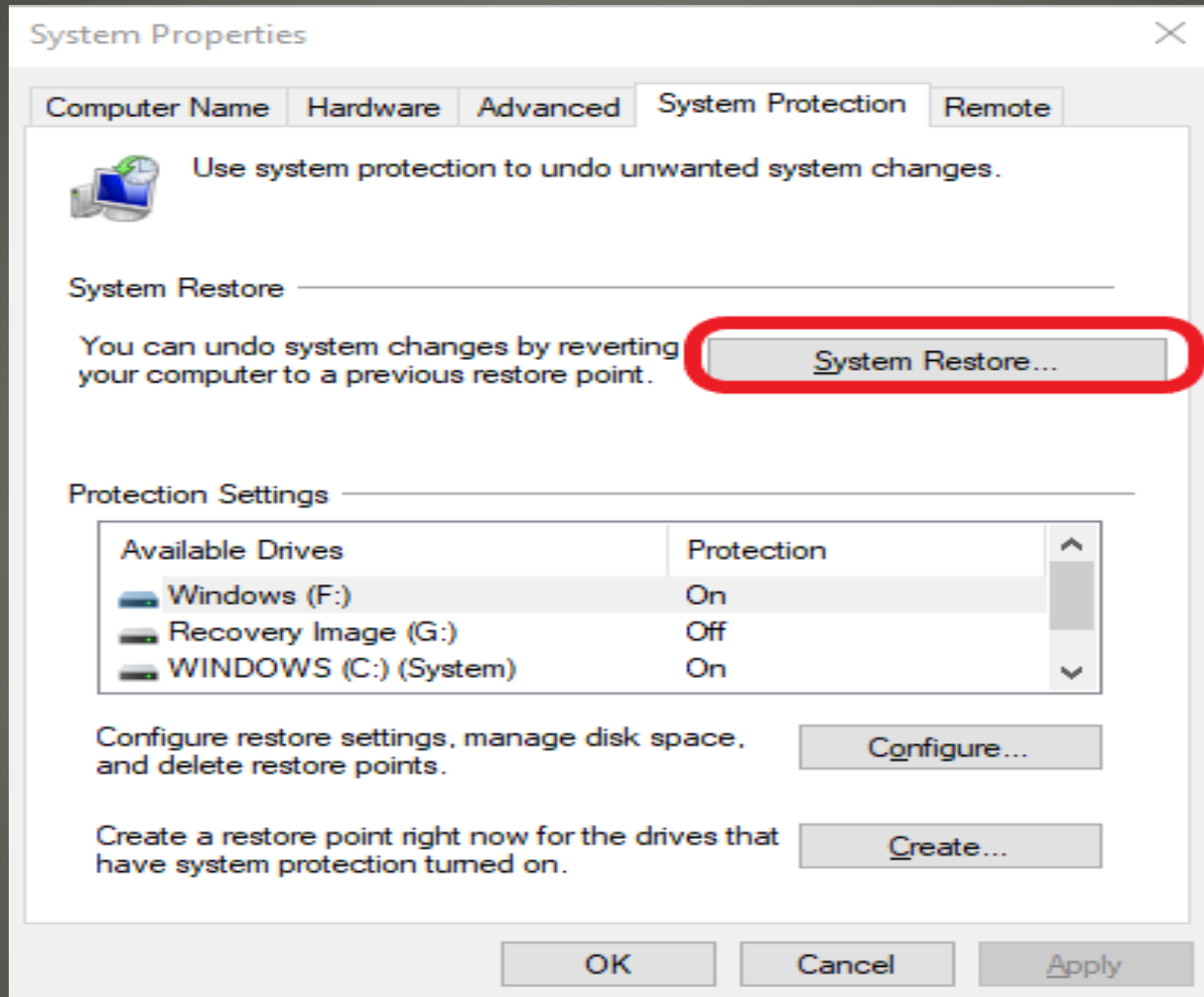
Windows News



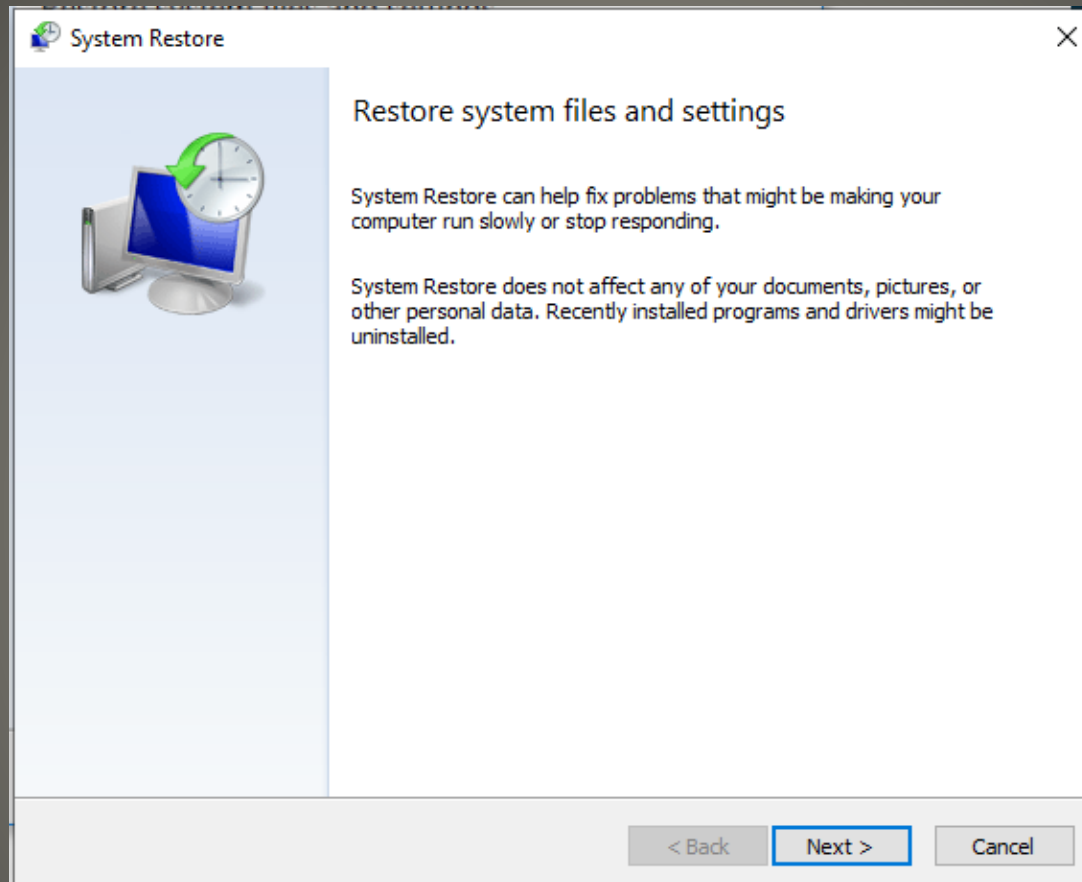
- Restore Point enable & tune



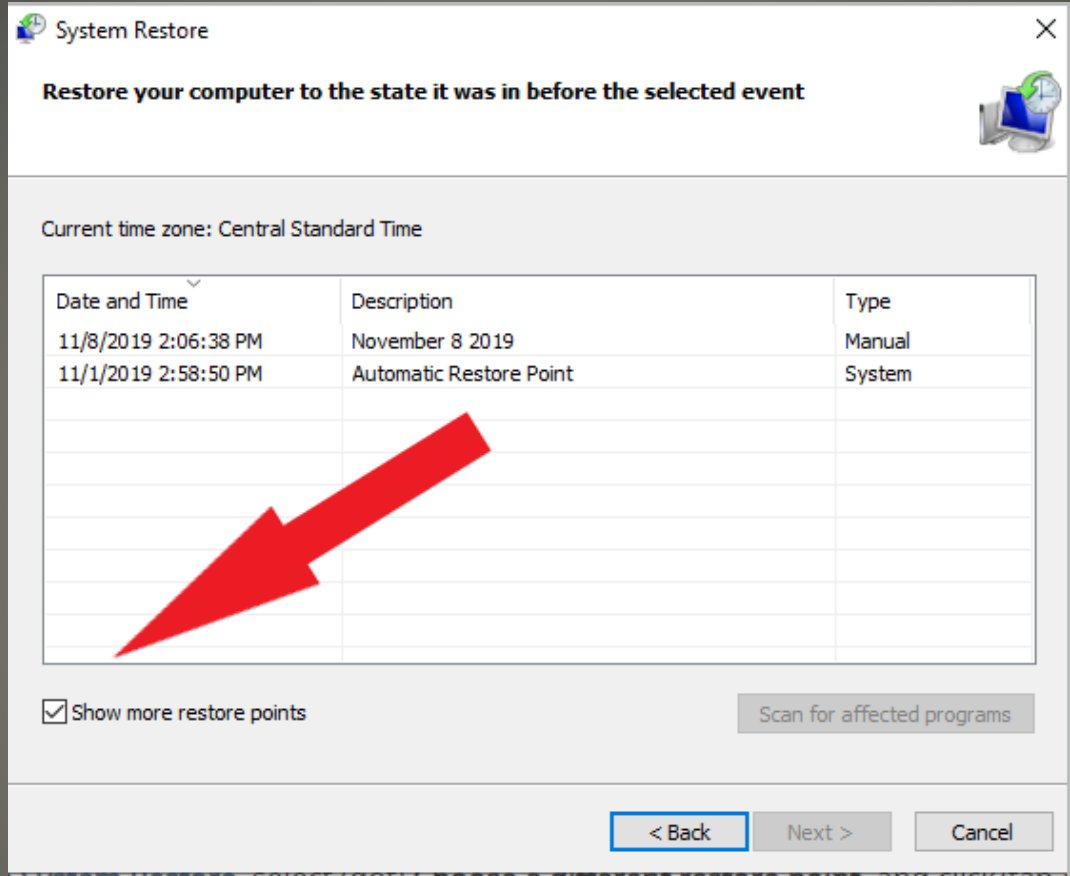
Windows settings revisit



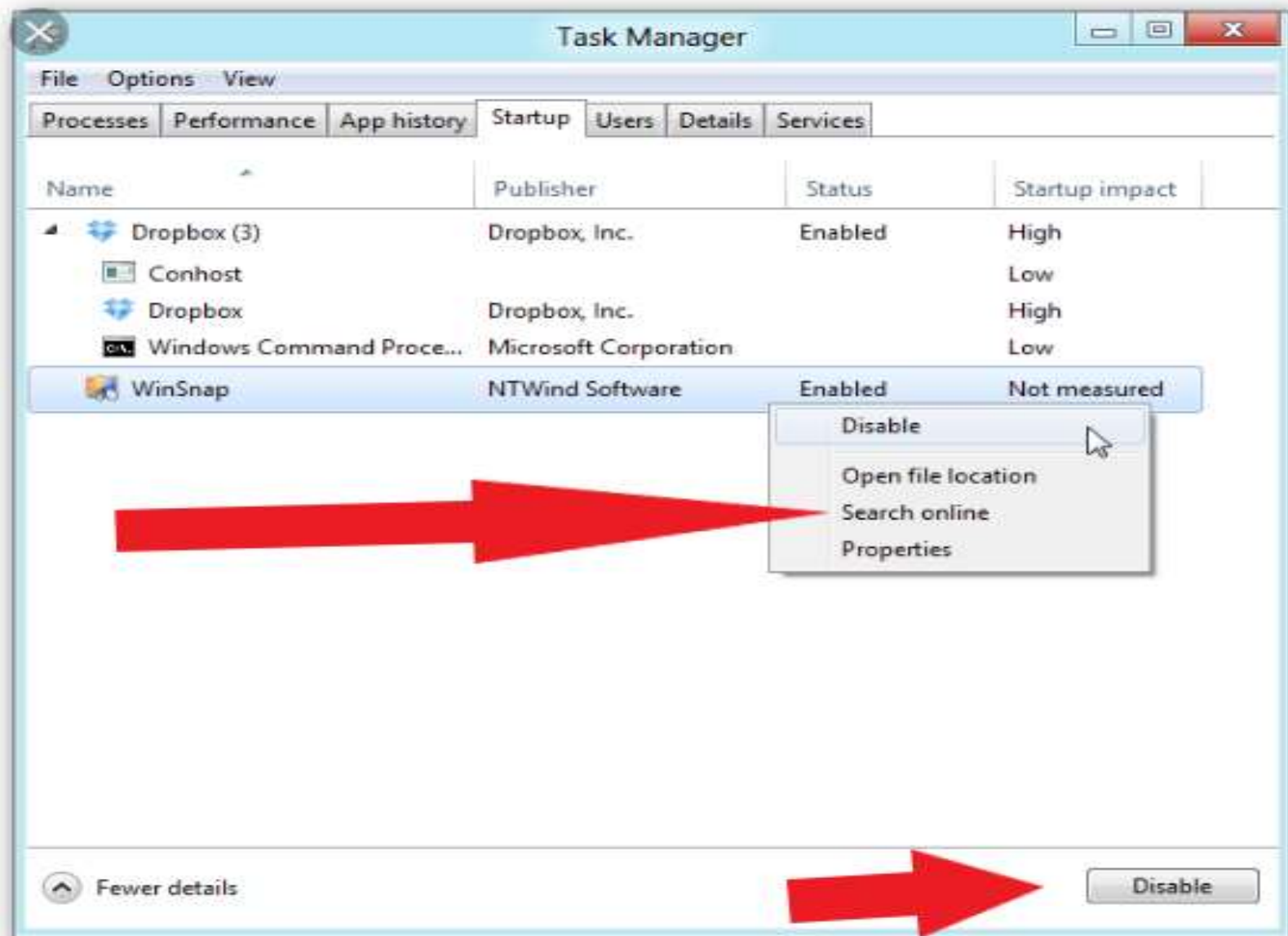
List Restore Points



Restore Points








Restore Points



INDIVIDUAL RESULTS

[Export Results](#)

DATE /TIME ▾	🔄 PING	⬇️ DOWNLOAD	⬆️ UPLOAD	DISTANCE	LOCATION /SERVER	PROVIDER	
	ms	Mbps	Mbps	mi			
 11/8/2019 5:01 PM	10	190.31	40.66	< 50	Georgetown, TX Suddenlink Communications LLC	Suddenlink	   



Your Internet speed is

300 Mbps



Latency

Unloaded

10 ms

Loaded

325 ms

Upload

Speed

42 Mbps

Client Georgetown, US [redacted] Suddenlink

Server(s) Open Connect, Netflix

⚙ Settings

340MB ⬇

60MB ⬆



Your Internet speed is

300 Mbps



Parallel connections

Min: Max:

Test duration (seconds)

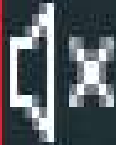
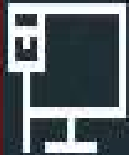
Min: Max:

- ☐ Measure loaded latency during upload
- ☐ Always show all metrics
- ☐ Save config for this device

Reset

Save


Cancel



5:16 PM
11/8/2019



Settings

 Home

Find a setting 

Network & Internet


 Status

 Wi-Fi

 Ethernet

 Dial-up

 VPN

 Airplane mode

 Mobile hotspot

 Data usage

 Proxy

Ethernet

  Connected

 Ethernet
Not connected

 Network 2
Connected

Related settings

[Change adapter options](#)

[Change advanced sharing options](#)

[Network and Sharing Center](#)

[Windows Firewall](#)

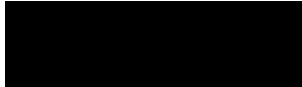
Have a question?

[Diagnose network connection issues](#)

[Get help](#)



Settings



Network profile

☒ Public

Your PC is hidden from other devices on the network and can't be used for printer and file sharing.

☐ Private

For a network you trust, such as at home or work. Your PC is discoverable and can be used for printer and file sharing if you set it up.

[Configure firewall and security settings](#)

IP settings

IP assignment: Automatic (DHCP)

Edit

Properties

Link-local IPv6 address: fe80::1d83:9b95:3a59:311e%11
IPv4 address: 192.168.1.115
IPv4 DNS servers: 192.168.1.1
Manufacturer: Realtek
Description: TP-Link Gigabit PCI Express Adapter
Driver version: 9.1.409.2015
Physical address (MAC): 34-E8-94-D7-C3-FB

Copy

IP settings

IP assignment: Automatic (DHCP)

Edit

Properties

Link-local IPv6 address: fe80::f872:c56e:f28c:63c6%16
IPv4 address: 172.16.42.152
IPv4 DNS servers: 172.16.42.1
Primary DNS suffix: lan
Manufacturer: Realtek
Description: Realtek USB FE Family Controller
Driver version: 10.5.920.2015
Physical address (MAC): 00-13-37-A6-82-06

Copy

Settings

Home

Find a setting

Network & Internet

Status

Wi-Fi

Ethernet

Dial-up

VPN

Airplane mode

Mobile hotspot

Data usage

Proxy

Ethernet

ppoli
Connected

Ethernet
Not connected

Network 2
Connected

Related settings

[Change adapter options](#)

[Change advanced sharing options](#)


[Network and Sharing Center](#)

[Windows Firewall](#)

Have a question?








[Diagnose network connection issues](#)

[Get help](#)

 Control Panel\Network and Internet\Network Connections

← → ↕ ↑  > Control Panel > Network and Internet > Network Connections

Organize ▼

<input type="checkbox"/> Name ^	Status	Device Name	Connectivity	Network Category	Owner	Type
 Ethernet	Network cable unplugged	Realtek PCIe GBE Family Contro...			System	LAN or High-Speed Internet
 Ethernet 2	Network 2	Realtek USB FE Family Controller	Internet access	Public network	System	LAN or High-Speed Internet
 Ethernet 4	Network cable unplugged	TAP-NordVPN Windows Adapte...			System	LAN or High-Speed Internet
 Ethernet 5	Network cable unplugged	TAP-ProtonVPN Windows Adap...			System	LAN or High-Speed Internet
 Ethernet 6	ppoli	TP-Link Gigabit PCI Express Ada...	Internet access	Public network	System	LAN or High-Speed Internet
 VirtualBox Host-Only Network #2	Enabled	VirtualBox Host-Only Ethernet ...			System	LAN or High-Speed Internet
 Wi-Fi	Not connected	Realtek RTL8822BE 802.11ac PCI...			System	LAN or High-Speed Internet

Control Panel\Network and Internet\Network Connections

Control Panel > Network and Internet > Network Connections

- Organize ▾
- Disable this network device
- Diagnose this connection
- Rename this connection
- View status of this connection
- Change settings of this connection

<input type="checkbox"/>	Name	Status	Device Name	Connectivity	Network Category	Owner	Type
	Ethernet	Network cable unplugged	Realtek PCIe GBE Family Contro...			System	LAN or High-Speed Internet
	Ethernet 2	Network 2	Realtek USB FE Family Controller	Internet access	Public network	System	LAN or High-Speed Internet
	Ethernet 4	Network cable unplugged	TAP-NordVPN Windows Adapte...			System	LAN or High-Speed Internet
	Ethernet 5	Network cable unplugged	TAP-ProtonVPN Windows Adap...			System	LAN or High-Speed Internet
<input checked="" type="checkbox"/>	Ethernet 6	ppoi	TP-Link Gigabit PCI Express Ada...	Internet access	Public network	System	LAN or High-Speed Internet
	VirtualBox Host-Only Network #2	Enabled	VirtualBox Host-Only Ethernet...			System	LAN or High-Speed Internet
	Wi-Fi	Not connected	Realtek RTL8822BE 802.11ac PCI...			System	LAN or High-Speed Internet



Ethernet 6 Status



General

Connection

IPv4 Connectivity: Internet
IPv6 Connectivity: No network access
Media State: Enabled
Duration: 4 days 20:26:55
Speed: 1.0 Gbps

Details...

Activity

Bytes: Sent 1,526,485,266 | Received 19,123,019,680



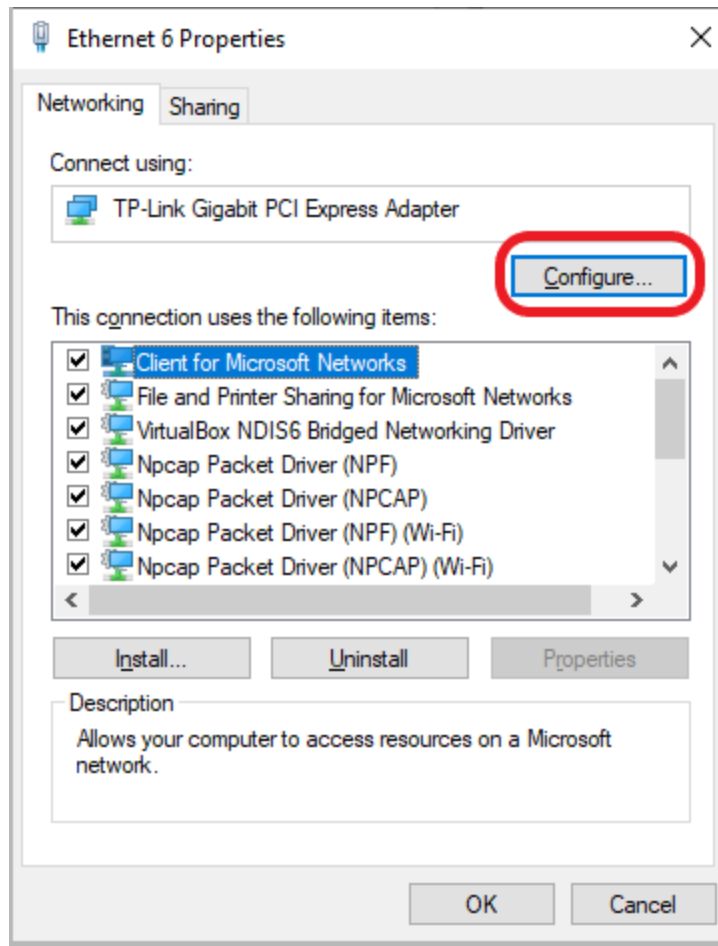
Properties



Disable

Diagnose

Close



TP-Link Gigabit PCI Express Adapter Properties

General

Advanced

Driver

Details

Events

Power Management

The following properties are available for this network adapter. Click the property you want to change on the left, and then select its value on the right.

Property:

- ARP Offload
- Flow Control
- Interrupt Moderation
- IPv4 Checksum Offload
- Jumbo Frame
- Large Send Offload v2 (IPv4)
- Large Send Offload v2 (IPv6)
- Network Address
- NS Offload
- Priority & VLAN
- Receive Buffers
- Speed & Duplex
- TCP Checksum Offload (IPv4)
- TCP Checksum Offload (IPv6)

Value:

Enabled

OK

Cancel

TP-Link Gigabit PCI Express Adapter Properties



General

Advanced

Driver

Details

Events

Power Management

The following properties are available for this network adapter. Click the property you want to change on the left, and then select its value on the right.

Property:

ARP Offload
Flow Control
Interrupt Moderation
IPv4 Checksum Offload
Jumbo Frame
Large Send Offload v2 (IPv4)
Large Send Offload v2 (IPv6)
Network Address
NS Offload
Priority & VLAN
Receive Buffers
Speed & Duplex
TCP Checksum Offload (IPv4)
TCP Checksum Offload (IPv6)

Value:

1.0 Gbps Full Duplex

OK

Cancel

TP-Link Gigabit PCI Express Adapter Properties



General

Advanced

Driver

Details

Events

Power Management

The following properties are available for this network adapter. Click the property you want to change on the left, and then select its value on the right.

Property:

ARP Offload
Flow Control
Interrupt Moderation
IPv4 Checksum Offload
Jumbo Frame
Large Send Offload v2 (IPv4)
Large Send Offload v2 (IPv6)
Network Address
NS Offload
Priority & VLAN
Receive Buffers
Speed & Duplex
TCP Checksum Offload (IPv4)
TCP Checksum Offload (IPv6)

Value:

1.0 Gbps Full Duplex
1.0 Gbps Full Duplex
10 Mbps Full Duplex
10 Mbps Half Duplex
100 Mbps Full Duplex
100 Mbps Half Duplex
Auto Negotiation

OK

Cancel



- USB 1.1 = 12 Mbit/s
- Firefire 400 = 400 Mbit/s
- USB 2.0 = 480 Mbit/s
- FireWire 800 = 800 Mbit/s
- USB 3.0 = 5 Gbit/s
- USB 3.1 = 10 Gbit/s
- eSATA = Up to 6 Gbit/s (750 MB/s) right now as it depend on the internal SATA chip.
- Thunderbolt = 10 Gbit/s \times 2 (2 channels)
- Thunderbolt 2 = 20 Gbit/s
- Thunderbolt 3 = 40 Gbit/s

- None of us are as experienced as all of us
- Awareness, Preparedness, Understanding
- Participate

