

The Sun City Ignition Zones

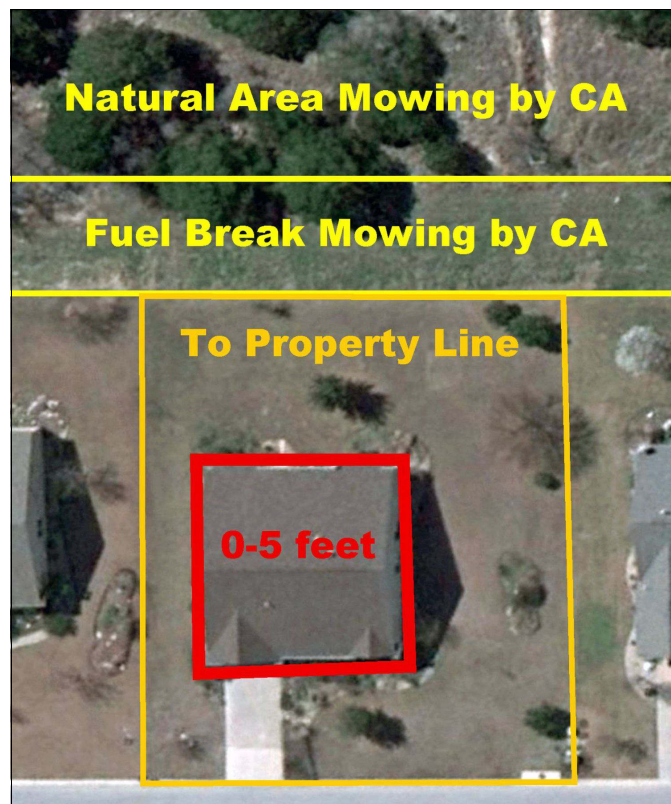
Firewise Communities/USA recently added a new zone to their Home Ignition Zone model (HIZ). It now includes a 0-5 foot zone around the house. This zone is the most critical in reducing the potential for embers to ignite the house.

We have used the added zone to develop a Sun City Home Ignition Zone (resident's responsibility) and a Common Area Ignition Zone (community association responsibility). The new Ignition Zones now allow us to discuss the roles of the resident and the Community Association for Firewise management.

Home Ignition Zone

The residence model focuses on the "home and its immediate surroundings to the property line." This emphasis is based on the house being the largest fuel source in the resident's property. Even though Sun City houses are 'fire resistant,' there are features and items on the structure where embers can collect on flammable features or enter openings. The focus in Sun City residents should become how maintenance of the structure relates to embers falling and starting fires. The Firewise Group provides a FREE Home Ignition Zone Evaluation when requested.

To reach the Sun City Texas Firewise web site go to www.sctexas.org. **Do Not Log In.** Click on "About Us" top center, scroll down on the left and click on Firewise, and then select your item.



The new Ignition Zones provide guidance for who is responsible for Firewise maintenance.

Common Area Ignition Zone

The Common Area Ignition Zone addresses tree and grass fires. Tree or crown fires are the largest potential source of embers. The Ashe juniper (cedar) trees are the primary path for a grass fire to move to the tree tops. Removal of small juniper trees or pruning the lower limbs reduces the potential for a grass fire to reach the tree tops. The grass fires, which produce few embers, could reach houses but the Level 3 mowing done 2-3 times each year provide a fuel break that reduces the fire size and slows the fire spread. The fuel break together with the lawn provide a space for the fire to become smaller and it may even go out.

Prepared by

Sun City Texas Firewise Group

