

Sun City Computer Club

Windows SIG

August 25, 2020

**Questions, Comments, Suggestions welcomed at
any time**

Even Now



- [Audio Recording of this session](#)
- Use the link above to access MP4 audio recording
- Audio Recording in Progress

- SIG attendees are required to be members of the chartered club sponsoring that SIG.
- Sun City Community Association By-law



- Your input is **desired**, needed, requested,
- 2020 meeting schedule – Annex
SIG leader?

- Windows SIG meeting/presentation frequency
Once a month Second Tuesday
Delay until afternoon?

Windows SIG news



- Dale Cockle has an eMail list he sends Microsoft Windows tips, news, and information to.

If you would like to join his list

Send your request:

k5jic@tstar.net

- sctxwindows.com

SIG News



- Microsoft Windows release rings
Fast, Slow, Release Preview
Now channels
Dev, Beta, Release Preview
- DoH at Windows level
- MS getting pushy with new Edge?
- Windows Defender registry disable disable
Presence of third party security suites

Windows News



- Flight Simulator on PC
- 154GB + 92GB
- Xbox? 2000 independent games
- Xbox Game Pass for PC (Beta)
- Internet Explorer and/or Legacy Edge
- Edge
- Live Mail died?
EML File Viewer sys.toolsgroup
- More press on Your Phone & Samsung

Windows News



Task Manager

File Options View

Processes Performance App history Startup Users Details Services

Name	Type	25% CPU	70% Memory	32% Disk	0% Network	52% GPU	GPU engine	Power usage
Apps (15)								
> Brave Browser (11)	App	0%	69.4 MB	0.1 MB/s	0 Mbps	0%	GPU 0 - 3D	Very low
> Firefox (9)	App	0.1%	146.4 MB	0.1 MB/s	0 Mbps	0%	GPU 0 - 3D	Very low
> Google Chrome (19)	App	0.1%	406.6 MB	0.1 MB/s	0 Mbps	0%	GPU 0 - 3D	Very low
> Malwarebytes Tray Application	App	0.1%	4.9 MB	0.1 MB/s	0 Mbps	0%		Very low
> Microsoft Edge (37)	App	7.2%	2,033.8 MB	0.1 MB/s	0.1 Mbps	0.1%	GPU 0 - 3D	Moderate
> Microsoft Edge (18)	App	0.1%	355.5 MB	0.1 MB/s	0.1 Mbps	0%	GPU 0 - 3D	Very low
> Microsoft Flight Simulator	App	10.6%	708.4 MB	8.2 MB/s	0.1 Mbps	46.5%	GPU 0 - 3D	Very high
> Microsoft PowerPoint (32 bit) ...	App	0.1%	52.6 MB	0.1 MB/s	0 Mbps	0%	GPU 0 - 3D	Very low
> Microsoft Store (2)	App	0%	1.2 MB	0 MB/s	0 Mbps	0%	GPU 0 - 3D	Very low
> Microsoft Word (32 bit)	App	0.1%	9.2 MB	0.1 MB/s	0 Mbps	0%		Very low
> Opera Internet Browser (22)	App	0.2%	441.0 MB	0.1 MB/s	0.1 Mbps	0%	GPU 0 - 3D	Very low
> Snipping Tool	App	0.1%	3.2 MB	0.2 MB/s	0 Mbps	0%		Very low
> Task Manager	App	0.4%	26.8 MB	0.1 MB/s	0 Mbps	0%		Very low
> Vivaldi (12)	App	0.1%	276.1 MB	0.1 MB/s	0 Mbps	0%	GPU 0 - 3D	Very low
> Xbox (3)	App	0.3%	153.9 MB	0 MB/s	0.1 Mbps	0%	GPU 0 - 3D	Very low





SATELLITE DATA STREAMING

(Recommended for the best experience)





NO WORLD STREAMING

(For slow internet connections. You will still need a constant connection for authentication)



- World Weather
- Actual air traffic
- Air traffic control
- World map
- Drone option
- Time of Day

- Google Earth Pro Flight simulator

Microsoft Flight Simulator



- Backup Windows
- Backup data
- Explicit restore point
- Shutdown security suite(s)
- Disconnect peripherals
- Check for Updates

- Do it

- Check for updates
- Explicit restore point
- Re-install security suite(s)

Feature/Windows Upgrade



The new Surface Duo

Do one better. There's a new way to get things done.

[PRE-ORDER >](#)



Surface Duo



- Half power Limit?

Run the Surface Diagnostics Toolkit

On the device with issues, use this toolkit to test hardware and fix drivers. This works with Surface devices running Windows 10.



[Download now](#)

The toolkit takes 15 minutes, but can take longer depending on the issue. When diagnostics are completed, go to the Devices page and continue your repair.

Surface



The image shows a Windows 10 desktop with the Settings app open to the Battery page. The battery level is at 37%. The Battery saver is turned off. The automatic turn-on threshold is set to 20%. The lower screen brightness option is checked. The battery usage per app section shows Microsoft Edge and Windows Default Lock Screen. A battery status notification is visible in the bottom right corner, showing 37% battery and 1 hour 25 minutes until fully charged. The power mode is set to Recommended. The system tray shows the time as 4:33 PM on 8/22/2020.

Battery

37%

Battery saver

To get more from your battery when it's running low, limit notifications and background activity.

Off

Turn battery saver on automatically at

20%

Lower screen brightness while in battery saver

Battery usage per app

Time period: 24 hours

Microsoft Edge

Windows Default Lock Screen
Managed by Windows

Battery status notification:

37% 1 hour 25 minutes until fully charged

Power mode (plugged in): Recommended

Best battery life Best performance

Battery settings

4:33 PM 8/22/2020

Surface Jitter



Advanced options

- Enable alternate boot sequence On
- Enable IPv6 for PXE Network boot option On
- Enable Boot from USB devices On
- Enable Boot Configuration Lock Off
- Enable Battery Limit Mode On

Surface Battery limit





Cleaning up
0% complete

Don't turn off your computer
Your organization manages your update settings



- Feature removed with Windows 10
- Scheduled to return
- Optional Update groups?

Optional Updates



← Settings

Home

Find a setting

Update & Security

Windows Update

Delivery Optimization

Windows Security

Backup

Troubleshoot

Recovery

Activation

Find my device

For developers

Windows Insider Program

Windows Update



You're up to date

Last checked: Today, 11:01

Check for updates

[View optional updates](#)



Pause updates for 7 days

Visit [Advanced options](#) to change the pause period



Change active hours

Currently 09:00 to 17:00



View update history

See updates installed on your device



Advanced options

Additional update controls and settings

See what's new

Your device recently got the latest update with new features and important security improvements.

[Explore new features](#)

Looking for info on the latest updates?

[Learn more](#)

Related links

[Check Storage](#)

[OS build info](#)

[Get help](#)

[Give feedback](#)



Devices and Printers

Control Panel > All Control Panel Items > Devices and Printers

Add a device Add a printer

Search Devices and Printers

Devices (11)

Printers (5)

ASUS VE278 ASUS VE278 ASUS VE278 ATAPI#05212 - 2 Back-UPS BX1500G FW000.L1 D USB FWL1 BRINK-PC Logitech# OCZ-VECTOR SAMSUNG HD154UI SAMSUNG HD154UI TV-60C8000

Fax Microsoft Print to PDF Microsoft XPS Document Writer Samsung Universal Print Driver 2 Send To OneNote 16

BRINK-PC Manufacturer: To Be Filled By O.E.M.
Model: To Be Filled By O.E.M.
Category: Desktop PC

1. Right click

2. Click on

- Network settings
- Sound settings
- System properties
- Device installation settings
- Power options
- Windows Update
- Start scan
- Scan profiles...
- Scan properties
- Create shortcut
- Troubleshoot
- Properties

TenForums.com



Device installation settings



Do you want to automatically download manufacturers' apps and custom icons available for your devices?

Yes (recommended)

No (your device might not work as expected)

 Save Changes

Cancel



🏠 View optional updates

Optional updates

 [Get help](#)

Choose the updates you want and then select Download and install.

▼ Driver updates

If you have a specific problem, one of these drivers might help. Otherwise, automatic updates will keep your drivers up to date.

- Intel - Other hardware - Intel(R) 6 Series/C200 Series Chipset Family SMBus Controller - 1C22

- Intel - Other hardware - Intel(R) 6 Series/C200 Series Chipset Family PCI Express Root Port 1 - 1C10

- Intel - Other hardware - 2nd generation Intel(R) Core(TM) processor family DRAM Controller - 0100

- Intel - Other hardware - Intel(R) Z68 Express Chipset Family LPC Interface Controller - 1C44

- Intel - Other hardware - Intel(R) 6 Series/C200 Series Chipset Family PCI Express Root Port 4 - 1C16

- Intel - Other hardware - Intel(R) 6 Series/C200 Series Chipset Family USB Enhanced Host Controller - 1C26

- Intel - Other hardware - Intel(R) 6 Series/C200 Series Chipset Family PCI Express Root Port 3 - 1C14

- Intel - Other hardware - Intel(R) 6 Series/C200 Series Chipset Family PCI Express Root Port 7 - 1C1C



Custom options for apps

Add an app

Desktop App

Browse

Find an app in the list and select it, then choose custom graphics settings for it. You might need to restart the app for your changes to take effect.

Search this list

Filter by: All apps



Application-steam-x32.exe

Let Windows decide (High performance)

C:\Program Files\Steam\steam.exe (Application-steam-x32.exe)

Options



Application-steam-x64.exe

Let Windows decide (High performance)



Camera

Let Windows decide (Power saving)



Cryptic Game Launcher

Graphics preference

What do you prefer for graphics performance?

Let Windows decide (High performance)

Power saving

GPU: Intel(R) HD Graphics 530

High performance

GPU: AMD Radeon R9 200 Series

Specific GPU

NVIDIA GeForce GTX 980

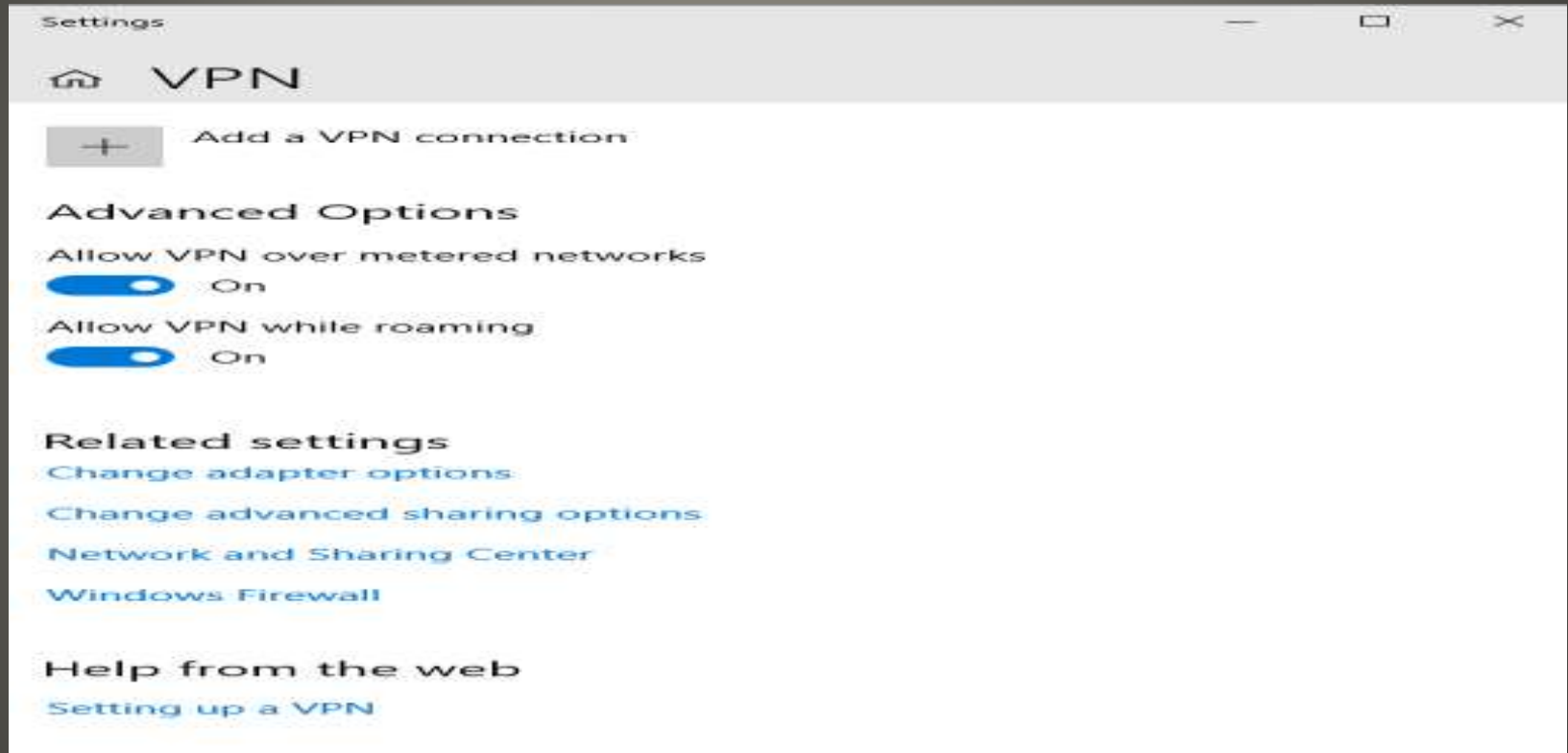
Save

Cancel

Windows News



- Network Profiles



Windows VPN



« ALL CLUBS

MEETING NOTES

CyberSecurity

Current news articles are given in the *Cyber Security News Archive* link.

MEETING NOTES

Meeting Notes Archive 2019

Cyber Security News Archive

Meeting Notes Archive 2018

 *Seminars*

Cyber Security SIG Meeting Notes

Sun City Computer Club WEB site navigation and information [[Download](#) | [View](#)] | 2,602.35kb

First Time SIG Safer Computing [[Download](#) | [View](#)] | 126.09kb

Safer WEB Browsing Class [[Download](#) | [View](#)] | 800.65kb

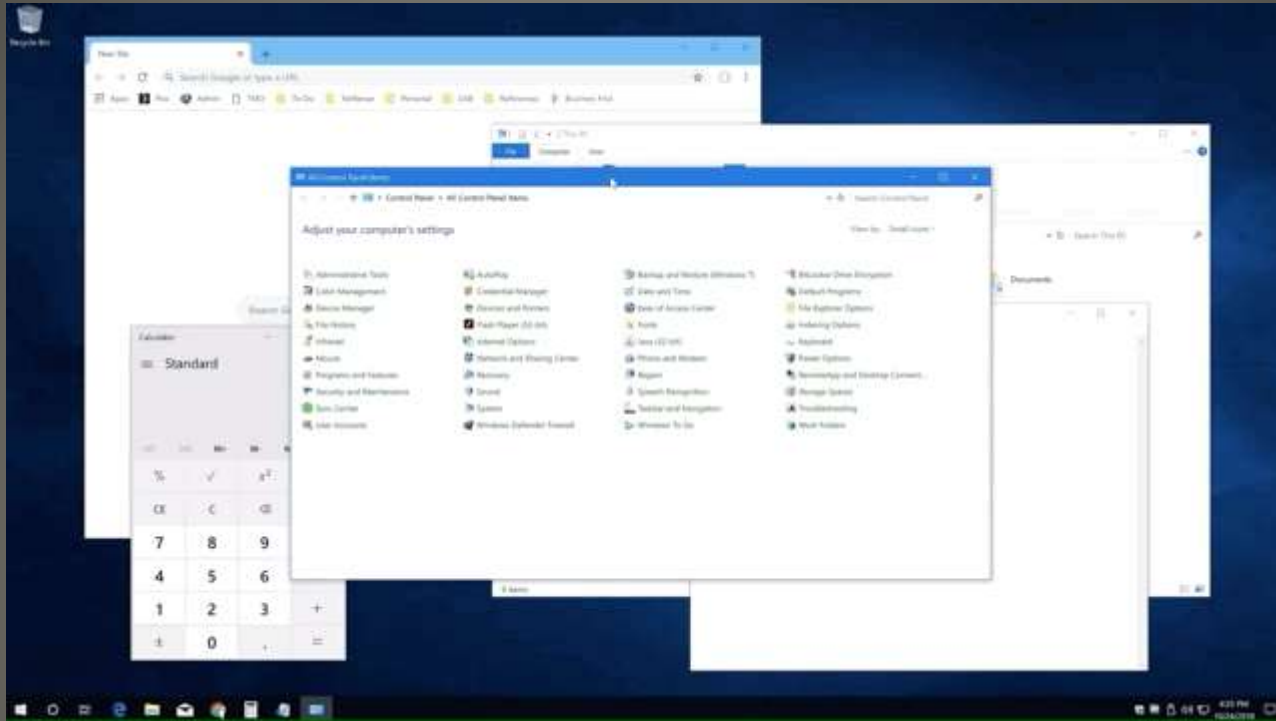
Safer WEB Browsing Part one [[Download](#) | [View](#)] | 1,585.12kb

Safer WEB Browsing Part two [[Download](#) | [View](#)] | 407.06kb

Sun City MAC Users Group MUG Securing your MAC [[Download](#) | [View](#)] | 786.08kb

Cyber Security SIG





Windows shake feature



- None of us are as experienced as all of us
- Awareness, Preparedness, Understanding
- Participate
- Topic Suggestions
- Questions: scccwindows@gmail.com

