

Sun City Computer Club

Windows SIG

February 9, 2021

**Questions, Comments, Suggestions welcomed at
any time**

Even Now



- [Audio Recording of this session](#)
- Use the link above to access MP4 audio recording
- Audio Recording in Progress
- Topic suggestions - please
- SIG attendees are required to be members of the chartered club sponsoring that SIG.
Sun City Community Association By-law
- Sun City WEB site changes
- Apologies for lack of zoom meeting
- Sig leader – anyone?



- Dale Cockle has an eMail list he sends Microsoft Windows tips, news, and information to.

If you would like to join his list

Send your request:

k5jic@tstar.net

- sctxwindows.com

SIG News



[Win10] Re: 210116 Windows Tips

[Win 10] Eject and Close CD/DVD Drives

Fwd: [Win10] Use SFC and DISM to Repair Windows

[Win10] Disable Edge's Default Copy/Paste Feature

[Win10] How to set up new PC

[Win10] Finally fixing Chrome's most annoying issue

[Win10] Bug using chkdsk

[Win10] Autoruns

[Win10] Group your taskbar shortcuts

[Win10] 'Rare' Windows Key Shortcuts

[Win10] File Explorer Tricks

[Win10] MS New way to upgrade

Rectangular Snip

[Win10] Disable Edge's New Copy and Paste Feature

[Win10] Signing Out Instead of Restarting

[Win10] Recovery Revisited: New way to perform clean installs

[Win10 20H2] Restore Control Panel on Desktop Context Menu

[Win10] Taskbar Search

[Win10] How to Minimize the File Explorer Ribbon

[Win10] Time to restore Copy to & Move to back on your Right-click Menu

[Win10] Microsoft kicks off rollout of 20H2

[Win 10] [C4S] Office web apps in Start menu

[Win10] October 2020 Update is Coming Soon

[Win10] Accessories: What's in it for you ?

[Win10] All About Version Updates

[Win10] PC won't start after an update

[Win10] Ed Bott's 7 Favorite Features

[Win10] Ed Bott's 7 Favorite Features

[Win10] Patch Tuesday problem

[Win10] Cascading Settings Context Menu on Desktop

Fwd: [Win10] Google Maps - Big Update



Windows Update



Updates paused

Your device won't be up to date while updates are paused.
Updates will resume on 2/15/2021

Resume updates

Patch Tuesday Schedule B



- 56 Vulnerabilities
- 11 Critical
- 1 being exploited
- 6 previously disclosed
- Cumulative Update
KB4601319
- .NET
KB4601050
- Malicious Software Removal Tool
KB890830

Windows Update Schedule B



- A few of the patches are rated more critical than Microsoft's rating
- Zerologon gets 3rd patch
- More reports of BSOD
- Takes longer to patch than most
- .NET patch might show up AFTER reboot

February Patch Tuesday



Windows Update



Updates available

Last checked: Today, 1:04 PM

Windows Malicious Software Removal Tool x64 - v5.86 (KB890830)

Status: Pending install

2021-02 Cumulative Update for .NET Framework 3.5 and 4.8 for Windows 10, version 20H2 for x64 (KB4601050)

Status: Pending install

2021-02 Cumulative Update for Windows 10 Version 20H2 for x64-based Systems (KB4601319)

Status: Downloading - 0%



2021-02 Cumulative Update for Windows 10 Version 20H2 for x64-based Systems (KB4601319)

Successfully installed on 2/9/2021

2021-02 Cumulative Update for .NET Framework 3.5 and 4.8 for Windows 10, version 20H2 for x64 (KB4601050)

Successfully installed on 2/9/2021



Windows Malicious Software Removal Tool x64 - v5.86 (KB890830)

Successfully installed on 2/9/2021



- Corrupt NTFS formatted hard drive
- One line



Your PC ran into a problem and needs to restart. We're just collecting some error info, and then we'll restart for you. (0% complete)

If you'd like to know more, you can search online later for this error: HAL_INITIALIZATION_FAILED

0-day NTFS vulnerability





Settings



View update history

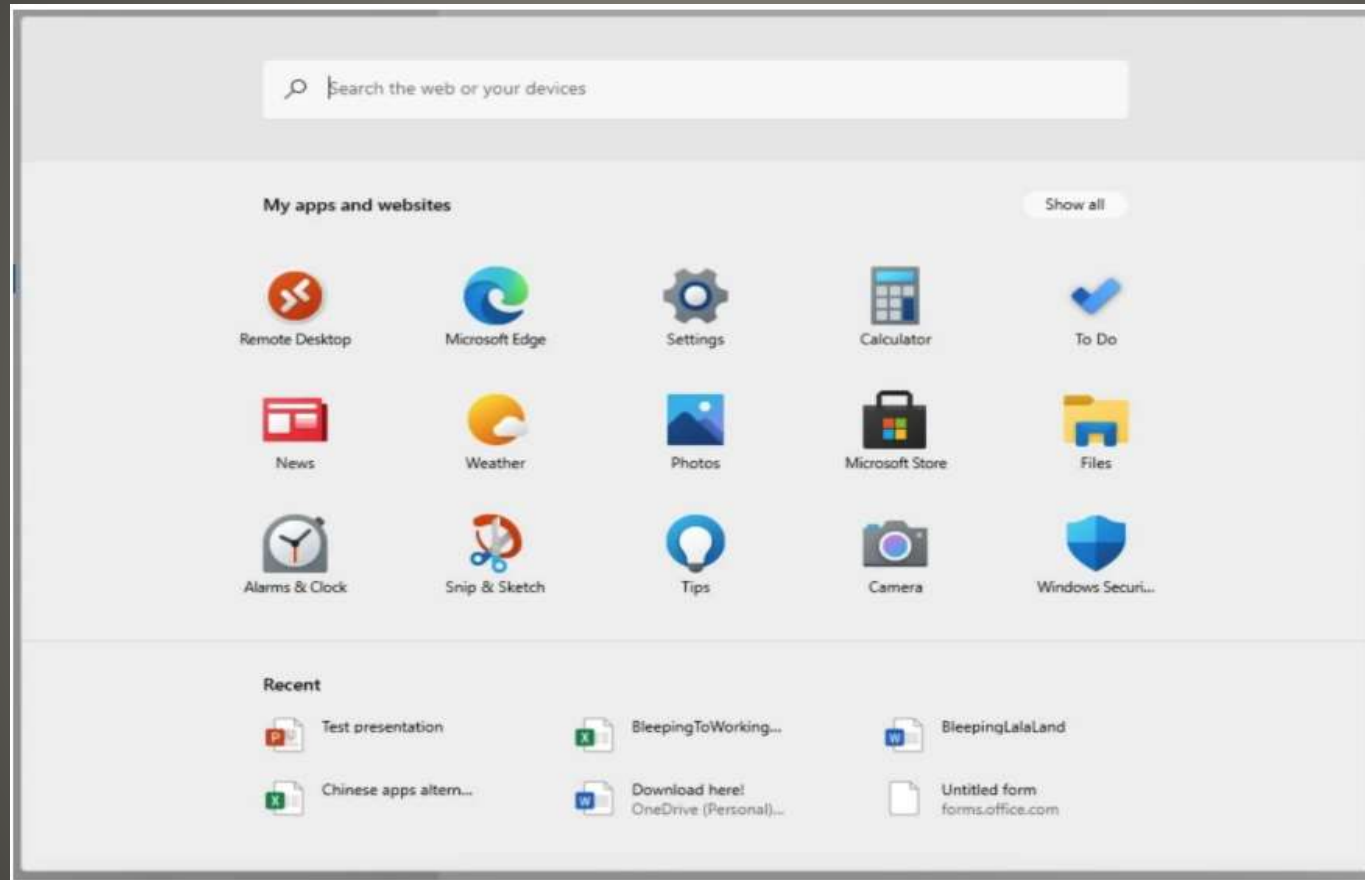
Uninstall updates

Recovery options

To remove potential problem patches

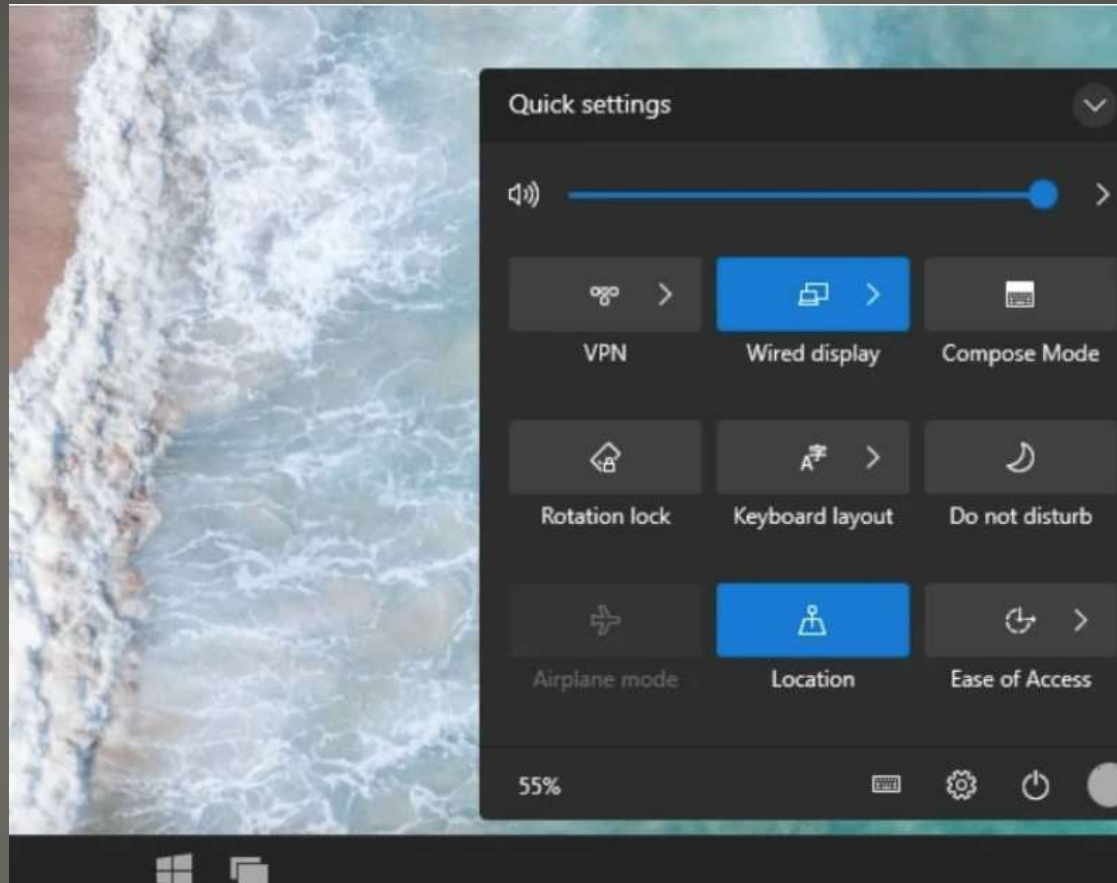


TBD



Windows 10X





Action Center



- Win32 & legacy code
- ChromeOS
- Add-on experience
- Dual screen
- Windows 10 S mode

Windows 10X

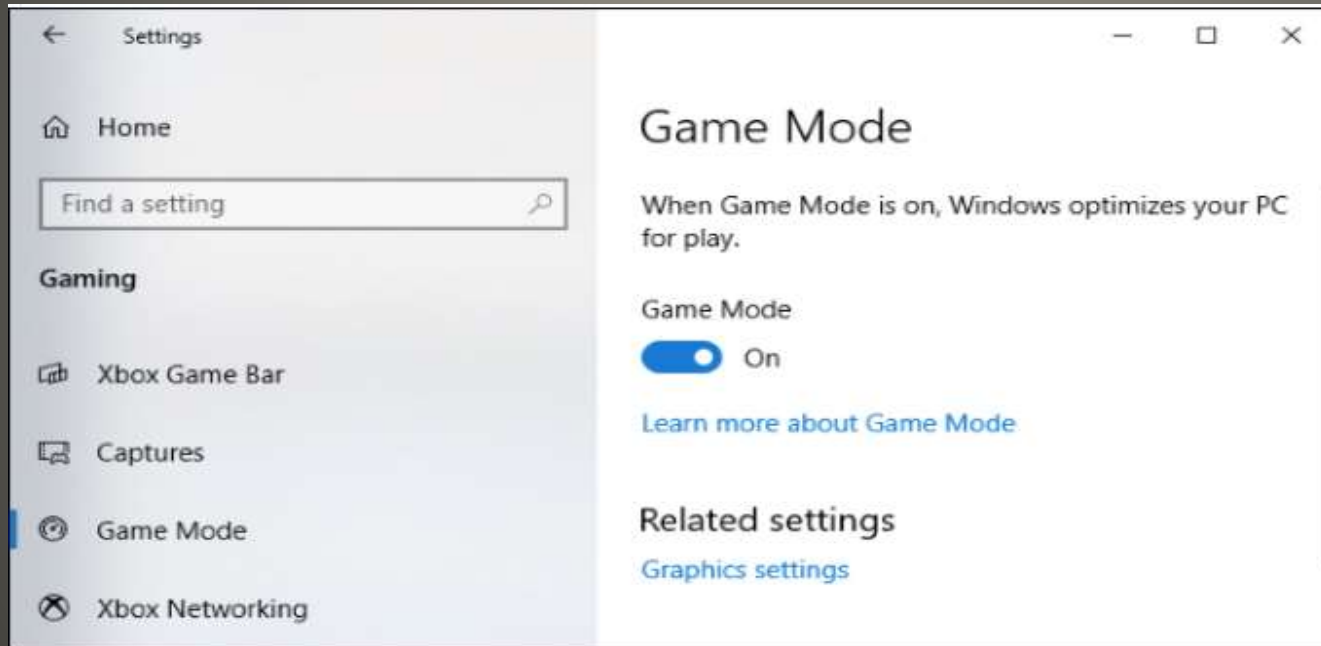


- Edge improve inking with pen vs. finger
- PC-as-a-service
- Viva

Windows News



- On by default
- May improve gaming performance
- May not



Game Mode



• Microsoft PowerToys | Microsoft Docs

Microsoft PowerToys: Utilities to customize Windows 10

12/02/2020 • 3 minutes to read • 

Microsoft PowerToys is a set of utilities for power users to tune and streamline their Windows 10 experience for greater productivity.

[Install PowerToys](#)

Processor support

- x64: Supported
- x86: In development (see [issue #602](#))
- ARM: In development (see [issue #490](#))

Current PowerToy utilities

The currently available utilities include:

Microsoft PowerToys



- Color Picker
- Fancy Zones
- File Explorer add-ons
- Image Resizer
- Keyboard Manager
- PowerRename
- PowerToys Run
- Shortcut Guide
- Video Conference Mute (experimental)

PowerToys





Power Toys Shortcut Guide



- Keyboard Manager
Change keyboard Layout
- Shortcut Guide
Hold Windows Key down
- Image Resizer
Right click on image
- Fancy Zones
Complex zone layout
- Power Toys Run
Search + Run
- Video Conference Mute
Mute audio and video regardless of focus

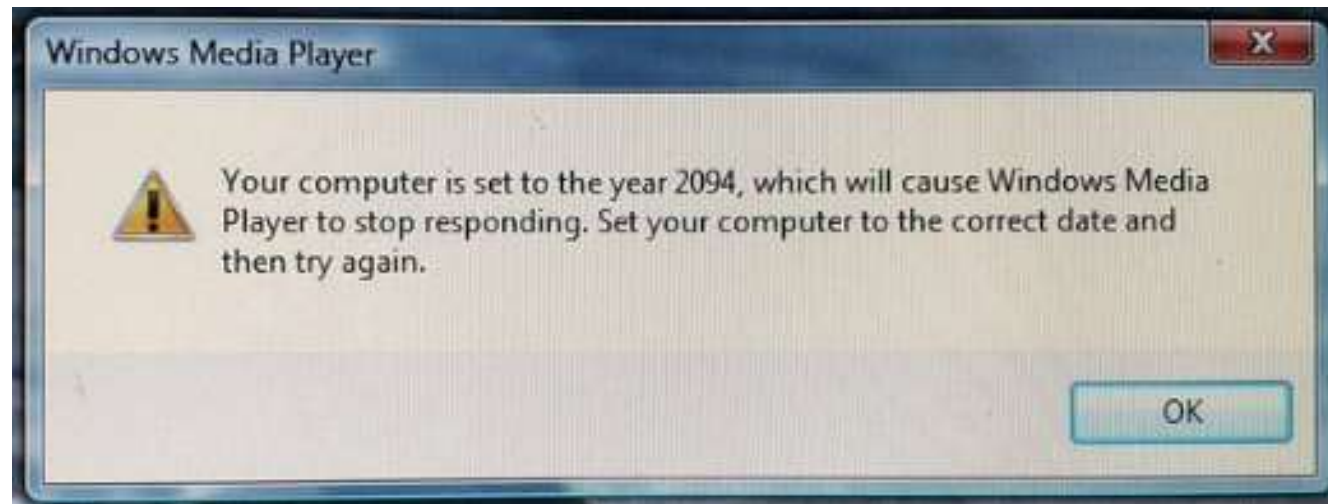
Power Toys



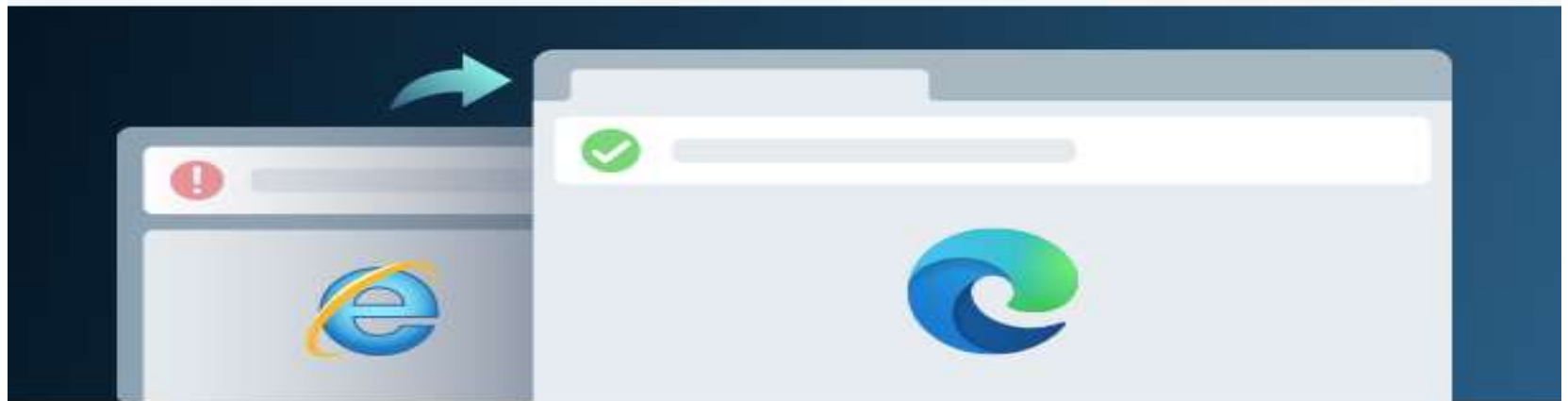
- Windows 1.0
 - Windows 2.x
 - Windows 3.x
 - Windows NT 3.x
 - Windows 95
 - Windows NT 4.x
 - Windows 98
 - Windows 2000
 - Windows Me
- Windows XP
 - Windows Server 2003
 - Windows Vista
 - Windows Server 2008
 - Windows 7
 - Windows 8
 - Windows 10

Windows History





You're now browsing in Microsoft Edge



This website works better on Microsoft Edge
Microsoft recommends continuing in Microsoft Edge to experience better speed, performance, and security.

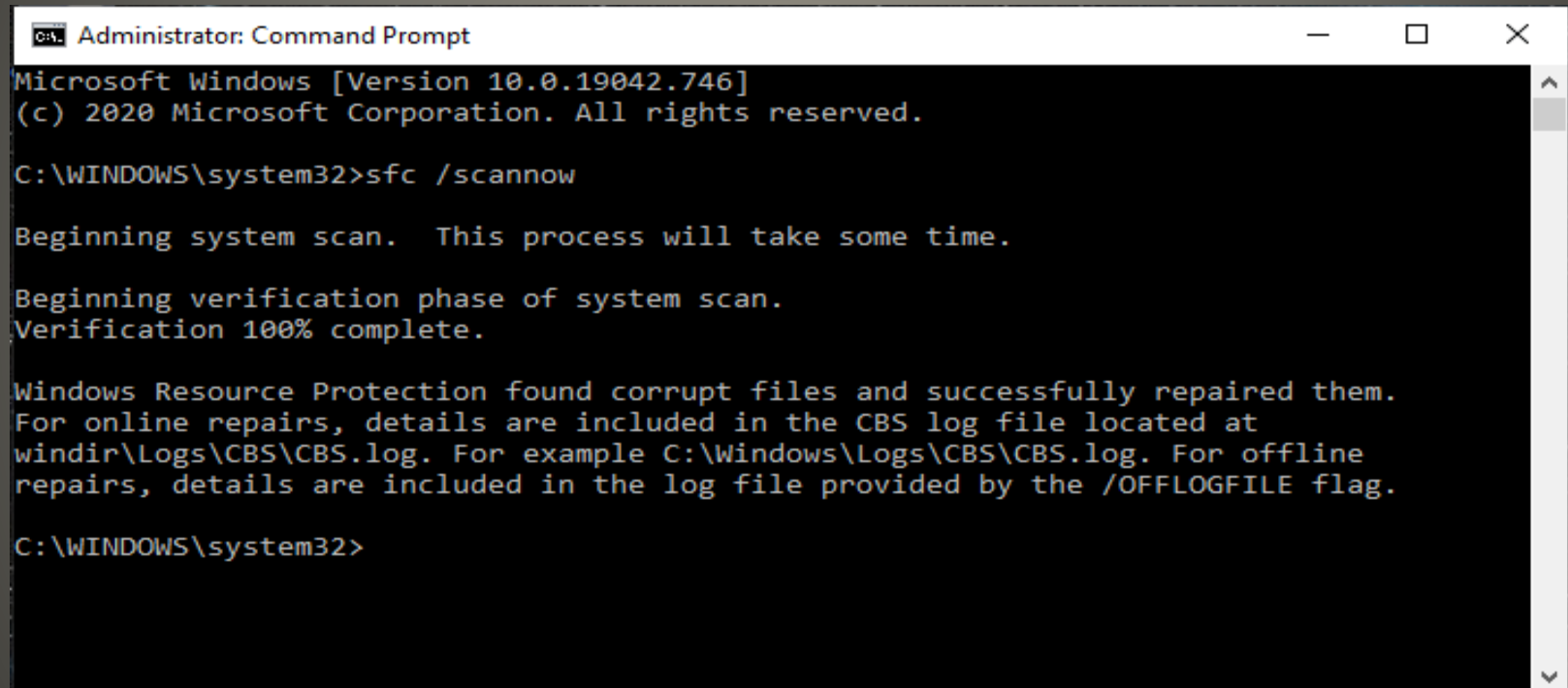


Avoid interruptions by bringing my browsing data and preferences from Internet Explorer whenever this happens

Continue browsing



- BACKUP system using Media Creation tool!
- Run CMD as Administrator



```
Administrator: Command Prompt
Microsoft Windows [Version 10.0.19042.746]
(c) 2020 Microsoft Corporation. All rights reserved.

C:\WINDOWS\system32>sfc /scannow

Beginning system scan. This process will take some time.

Beginning verification phase of system scan.
Verification 100% complete.

Windows Resource Protection found corrupt files and successfully repaired them.
For online repairs, details are included in the CBS log file located at
windir\Logs\CBS\CBS.log. For example C:\Windows\Logs\CBS\CBS.log. For offline
repairs, details are included in the log file provided by the /OFFLOGFILE flag.

C:\WINDOWS\system32>
```

System File Checker



File Explorer window showing the contents of the folder **C:\Windows\Logs\CBS**.

The ribbon includes the following tabs and groups:

- File** (selected)
- Home**
- Share**
- View**

The ribbon groups and their icons are:

- Clipboard**: Pin to Quick access, Copy, Paste, Cut, Copy path, Paste shortcut.
- Organize**: Move to, Copy to, Delete, Rename.
- New**: New folder.
- Open**: Properties, Open, Edit, History.
- Select**: Select all, Select none, Invert selection.

The address bar shows the path: **This PC > WINDOWS (C:) > Windows > Logs > CBS**. The search bar contains **Search CBS**.

The left sidebar shows the following folders:

- AppReadings
- assembly
- bcastdvr
- Boot
- Branding
- CbsTemp
- Containers
- Cursors
- ...

The main pane displays a list of files and folders:

Name	Date modified	Type	Size
<input checked="" type="checkbox"/> CBS.log	1/31/2021 12:58 PM	Text Document	1,639 KB
<input type="checkbox"/> CbsPersist_20201110184837.cab	11/10/2020 12:45 PM	Cabinet File	1,613 KB
<input type="checkbox"/> CbsPersist_20201201194408.cab	12/1/2020 11:47 AM	Cabinet File	2,971 KB
<input type="checkbox"/> CbsPersist_20201208193911.cab	12/8/2020 1:36 PM	Cabinet File	1,829 KB
<input type="checkbox"/> CbsPersist_20210112183558.cab	1/12/2021 12:19 PM	Cabinet File	1,365 KB
<input type="checkbox"/> CbsPersist_20210112210337.cab	1/12/2021 1:07 PM	Cabinet File	2,301 KB
<input type="checkbox"/> FilterList.log	1/12/2021 12:51 PM	Text Document	1 KB

At the bottom, the status bar indicates: **7 items | 1 item selected 1.59 MB**.



```

2021-01-13 16:47:55, Info      CSI  00000006 Performing 1 operations as follows:
(0) Scavenge: flags: 00000117
2021-01-13 16:47:55, Info      CSI  00000007 Scavenge: Begin processing lists
2021-01-13 16:47:55, Info      CSI  00000008 Scavenge: Setting maximum delta file size limit to 32 MB.

2021-01-13 16:47:56, Info      CSI  00000009 Scavenge: Begin planning
2021-01-13 16:47:58, Info      CSI  0000000a Skip up level servicing stack: [1:90]'amd64_microsoft-windows-msmq-installer_31
2021-01-13 16:47:58, Info      CSI  0000000b Skip up level servicing stack: [1:92]'amd64_microsoft-windows-msmq-installer_31
2021-01-13 16:48:01, Info      CSI  0000000c Skip up level servicing stack: [1:88]'x86_microsoft-windows-msmq-installer_31bf3
2021-01-13 16:48:01, Info      CSI  0000000d Skip up level servicing stack: [1:90]'x86_microsoft-windows-msmq-installer_31bf3
2021-01-13 16:48:06, Info      CSI  0000000e Scavenge: Planning Complete.

The following actions will be performed:
  Regeneration Candidates: 0
  Removal Candidates: 0
  Superseded/LDR (Delta Compression) Candidates: 0
  Null-Delta Compression Candidates:
    Mutable file Candidates: 0
    Boot-Recovery Candidates: 0
  Backup regeneration candidates: 0
  Deletion Candidates (Non Driver): 0
  Driver Deletion Candidates: 0
  WinSxS Orphaned Objects Candidates: 1
  Manifests Orphaned Objects Candidates: 0


2021-01-13 16:48:06, Info      CSI  0000000f Scavenge: List processing complete.
2021-01-13 16:48:06, Info      CSI  00000010 Couldn't mark for pending delete: [1:38 ml:39]'SystemRoot\WinSxS\Temp\Pendi
2021-01-13 16:48:06, Info      CSI  00000011 Couldn't mark for pending delete: [1:38 ml:39]'SystemRoot\WinSxS\Temp\Pendi
2021-01-13 16:48:29, Info      CSI  00000012 ICSITransaction::Commit calling IStorePendingTransaction::Apply - applyflags=5
2021-01-13 16:48:29, Info      CSI  00000013 Creating NT transaction (seq 1)
2021-01-13 16:48:29, Info      CSI  00000014 Created NT transaction (seq 1) result 0x00000000, handle @0x33c
2021-01-13 16:48:29, Info      CSI  00000015 Poqexec successfully registered in [1:12 ml:13]'SetupExecute'
2021-01-13 16:48:29, Info      CSI  00000016@2021/1/13:22:48:29.252 Beginning NT transaction commit...
2021-01-13 16:48:29, Info      CSI  00000017@2021/1/13:22:48:29.274 CSI perf trace:


CSIPERF:TXCOMMIT;21893
2021-01-13 16:48:29, Info      CBS  Scavenge: Completed, disposition: 0X1
2021-01-13 16:48:29, Info      CSI  00000018@2021/1/13:22:48:29.275 CSI Transaction @0x22cd693fdfo destroyed
2021-01-13 16:48:29, Info      CBS  Maint: end scavenge, scavenge time so far: 35 seconds
2021-01-13 16:48:29, Info      CBS  Maint: completed, interruptions: 0, (this pass: time: 49 seconds, used space change: 22344 K
2021-01-13 16:48:29, Info      CBS  Reboot mark cleared
2021-01-13 16:48:29, Info      CBS  Winlogon: Simplifying Winlogon CreateSession notifications

```

media creation tool windows 10 x Download Windows 10 x +

← → ↺ 🏠 📁 https://www.microsoft.com/en-us/software-downlo... 🔍 ⭐ ⚙️ 📁 📁 InPrivate ...

 Explore the world from your desktop—one photo at a time. Get the Bing Wallpaper app today. [No thanks](#) [Get it now](#)

 Microsoft | Software Download Windows Windows Insider Preview FAQ All Microsoft 🔍 👤

Download Windows 10

Before updating, please refer to the **Windows release information status** for known issues to confirm your device is not impacted.

Windows 10 October 2020 Update

The Update Assistant can help you update to the latest version of Windows 10. To get started, click **Update now**.

[Update now](#)


[Privacy](#)

Create Windows 10 installation media

To get started, you will first need to have a license to install Windows 10. You can then download and run the media creation tool. For more information on how to use the tool, see the instructions below.

[Download tool now](#)

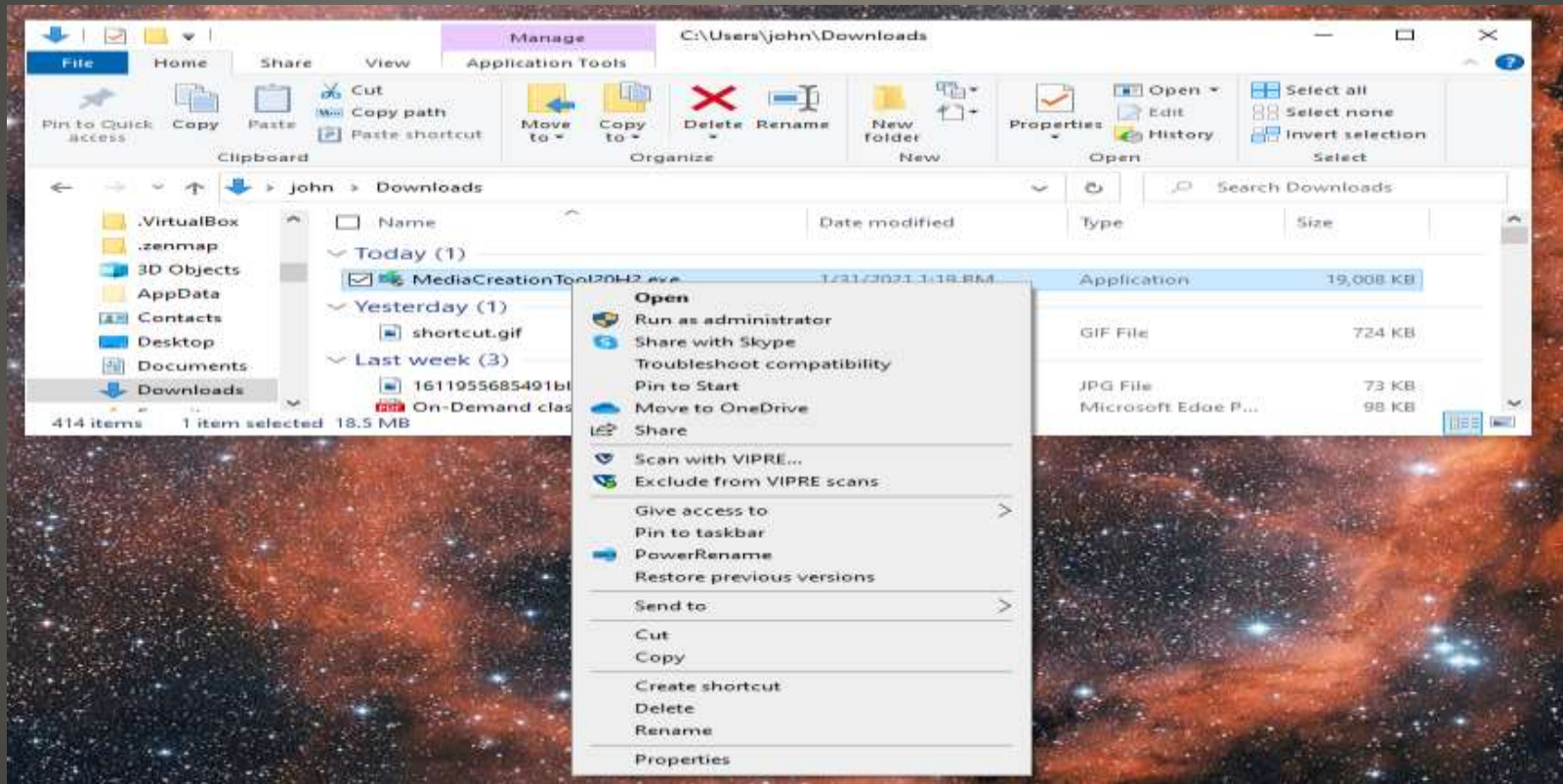
[Privacy](#)



Media Creation Tool



- Save As



Media Creation Tool



- User Access Control
Provide ADMINISTRATOR credentials
- Better run Administrator account on fresh reboot



What do you want to do?

- ☐ Upgrade this PC now
- ☒ Create installation media (USB flash drive, DVD, or ISO file) for another PC



Select language, architecture, and edition

Please select from one of the available options to continue.

Language English (United States) ▾

Edition Windows 10 ▾

Architecture Both ▾

☐ [Use the recommended options for this PC](#)



Choose which media to use

If you want to install Windows 10 on another partition, you need to create and then run the media to install it.

☒ USB flash drive

It needs to be at least 8 GB.

☐ ISO file

You'll need to burn the ISO file to a DVD later.



Choose which media to use

If you want to install Windows 10 on another partition, you need to create and then run the media to install it.

☒ USB flash drive

It needs to be at least 8 GB.


☐ ISO file

You'll need to burn the ISO file to a DVD later.



Downloading Windows 10

Feel free to keep using your PC.

 Progress: 7%



Creating Windows 10 media

Feel free to keep using your PC.

 Progress: 18%



Your USB flash drive is ready



```
Administrator: Command Prompt
Microsoft Windows [Version 10.0.19041.746]
(c) 2020 Microsoft Corporation. All rights reserved.

C:\WINDOWS\system32>DISM /Online /Cleanup-Image /CheckHealth

Deployment Image Servicing and Management tool
Version: 10.0.19041.746

Image Version: 10.0.19041.746

No component store corruption detected.
The operation completed successfully.

C:\WINDOWS\system32>
```

Deployment Image Servicing and Management



Administrator: Command Prompt

Microsoft Windows [Version 10.0.19041.746]

(c) 2020 Microsoft Corporation. All rights reserved.

C:\WINDOWS\system32>Dism /Online /Cleanup-Image /ScanHealth

Deployment Image Servicing and Management tool

Version: 10.0.19041.746

Image Version: 10.0.19041.746

[=====100.0%=====] No component store corruption detected.
The operation completed successfully.

C:\WINDOWS\system32>

DSIM ScanHealth



- IFF
- DSIM /Online /Cleanup-Image /RestoreHealth

DSIM



The screenshot shows the Windows Settings application. On the left is a navigation pane with a 'Settings' header, a 'Home' icon, a search bar labeled 'Find a setting', and two sections: 'Privacy' with links to 'General', 'Speech', 'Inking & typing personalization', 'Diagnostics & feedback', and 'Activity history'; and 'App permissions' with links to 'Location', 'Camera', and 'Microphone'. The main pane is titled 'Background apps' and contains a sub-header 'Background Apps'. Below this is a toggle switch for 'Let apps run in the background', which is currently turned 'Off'. A section titled 'Choose which apps can run in the background' includes a descriptive paragraph: 'Choose which apps can receive info, send notifications, and stay up-to-date, even when you're not using them. Turning background apps off can help conserve power.' Below this is a list of applications with their respective icons and toggle switches, all of which are currently 'Off': 3D Builder, 3D Viewer, 7Z Opener, Alarms & Clock, Alexa, and Amazon.

Settings

Home

Find a setting

Privacy

- General
- Speech
- Inking & typing personalization
- Diagnostics & feedback
- Activity history

App permissions

- Location
- Camera
- Microphone

Background apps

Background Apps

Let apps run in the background

☐ Off

Choose which apps can run in the background

Choose which apps can receive info, send notifications, and stay up-to-date, even when you're not using them. Turning background apps off can help conserve power.

	3D Builder	<input type="checkbox"/> Off
	3D Viewer	<input type="checkbox"/> Off
	7Z Opener	<input type="checkbox"/> Off
	Alarms & Clock	<input type="checkbox"/> Off
	Alexa	<input type="checkbox"/> Off
	Amazon	<input type="checkbox"/> Off

Background apps setting



- Diagnostic Data Viewer
- Mail and Calendar
- Maps
- Messaging
- Microsoft Photos
- Microsoft Store
- Office
- Skype
- Weather
- Windows Security
- Your Phone

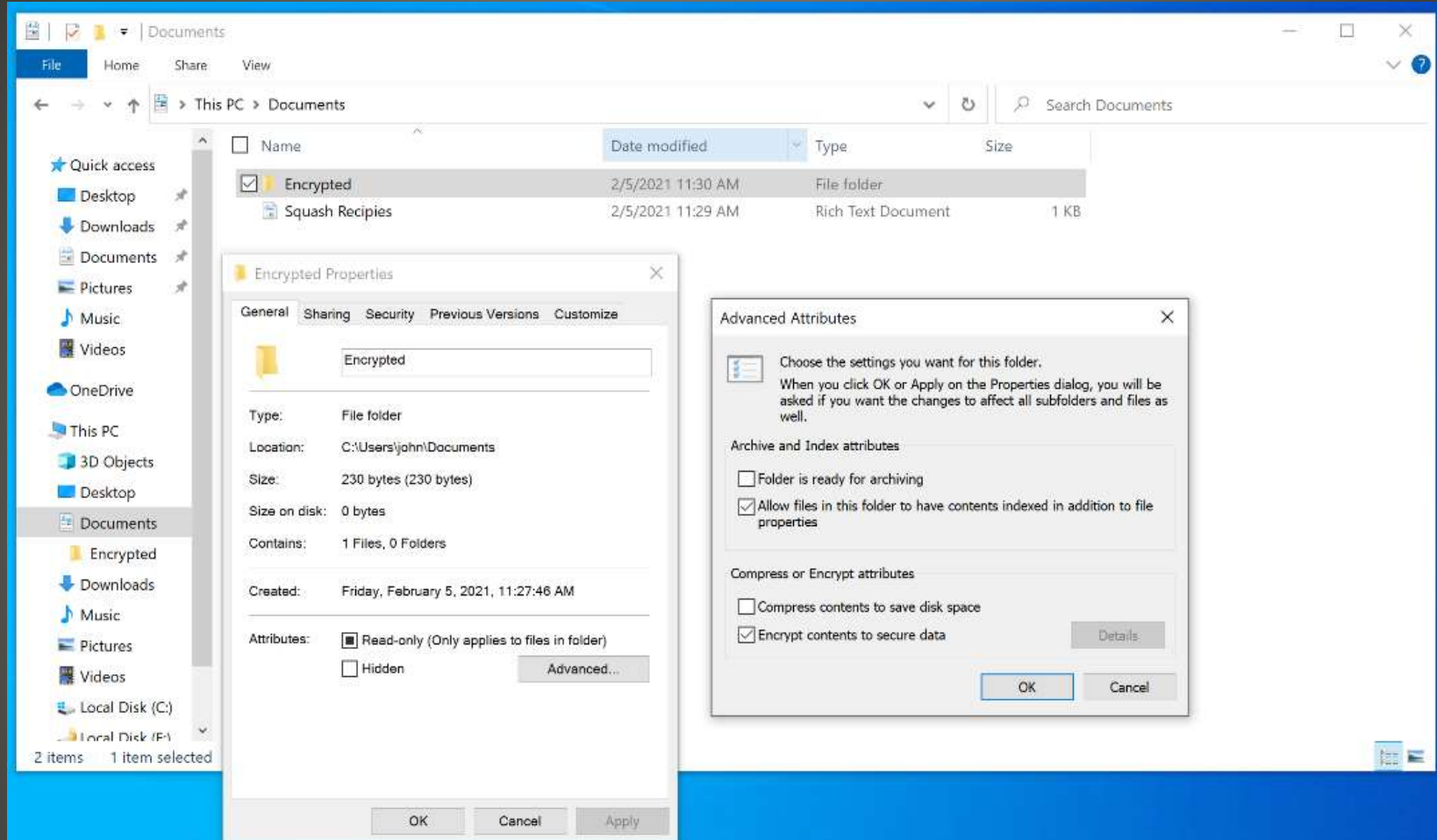
Consider value



- DOUBLE EDGED SWORD

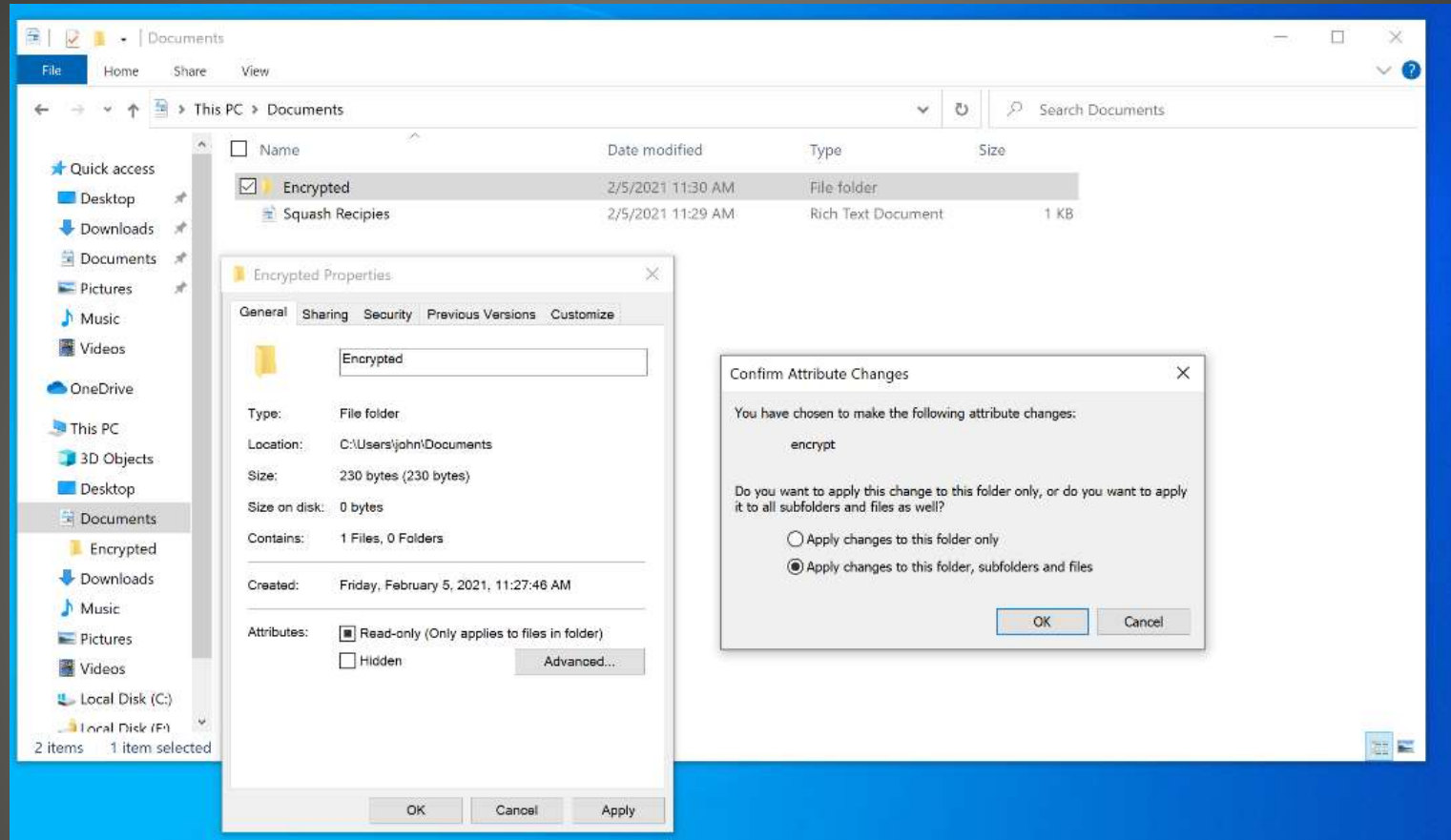
Encryption for Protection





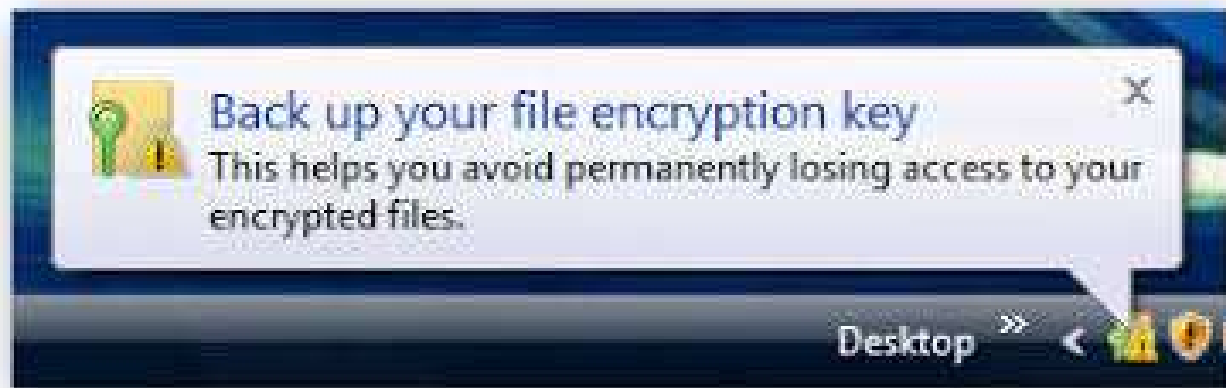
Windows PRO folder

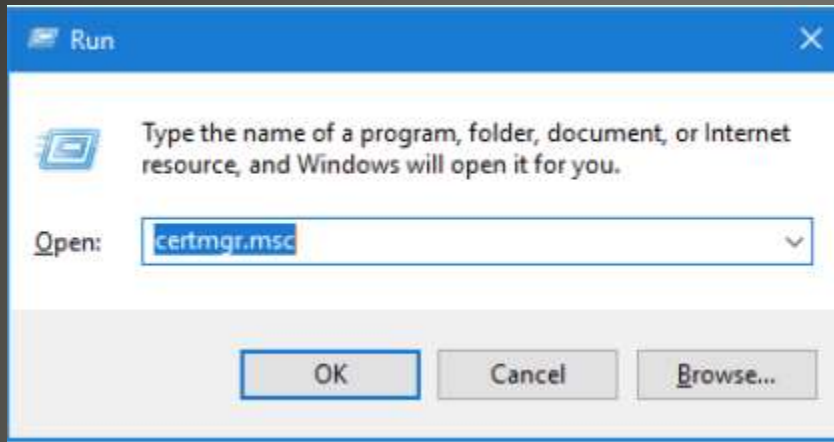




Windows PRO folder Apply

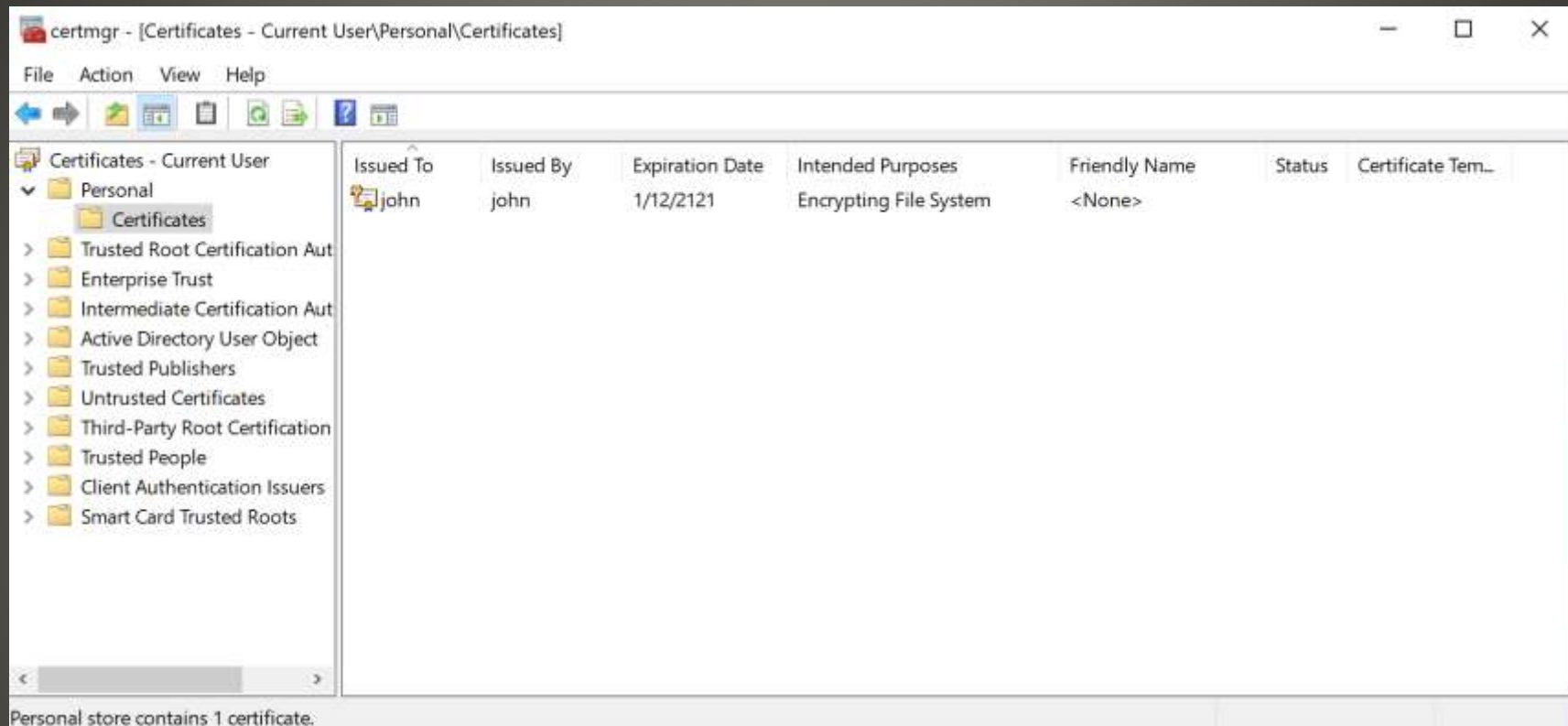






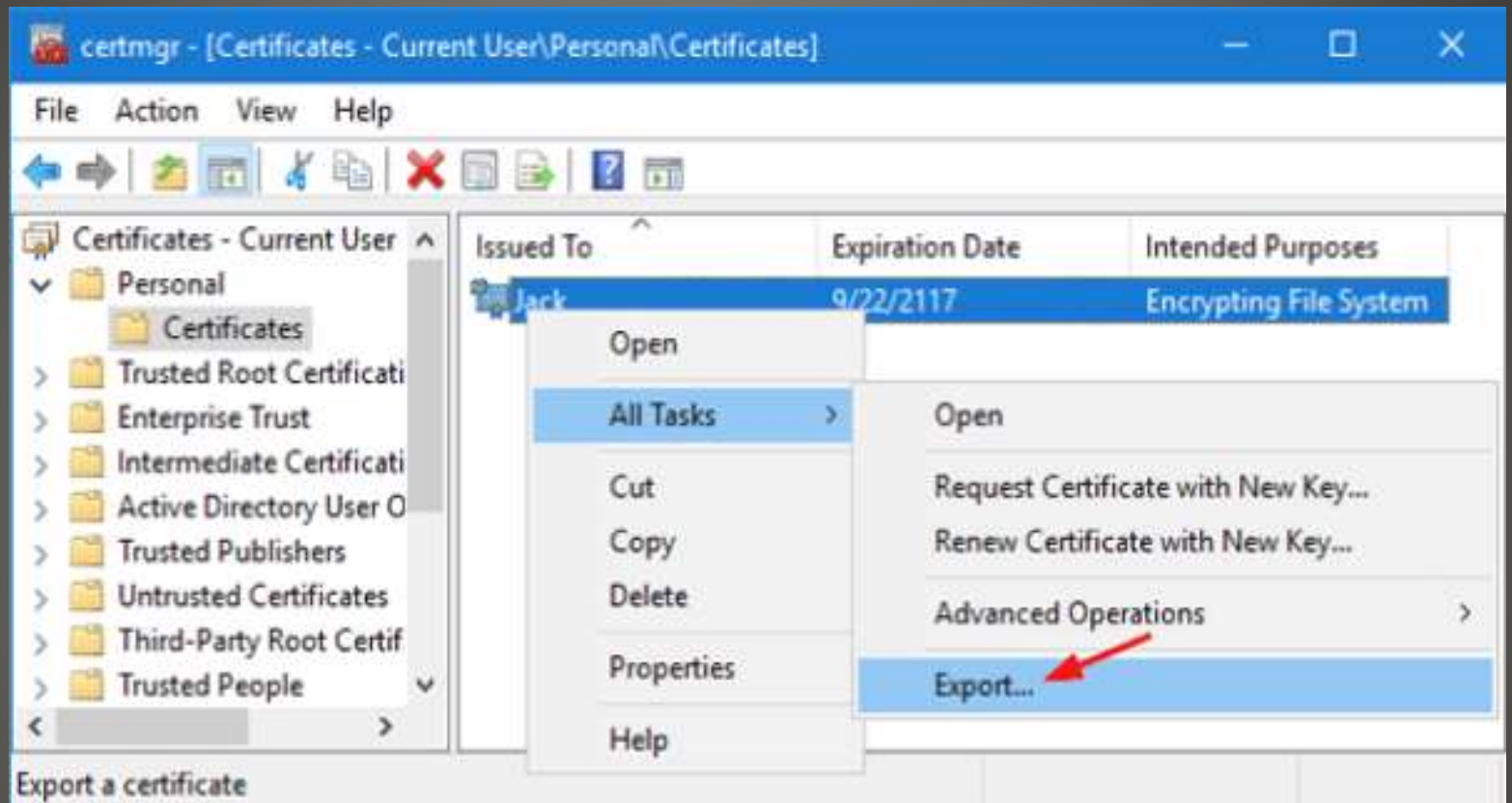
EFS





EFS Certificate to backup/export







Certificate Export Wizard

Welcome to the Certificate Export Wizard

This wizard helps you copy certificates, certificate trust lists and certificate revocation lists from a certificate store to your disk.

A certificate, which is issued by a certification authority, is a confirmation of your identity and contains information used to protect data or to establish secure network connections. A certificate store is the system area where certificates are kept.

To continue, click Next.

Next

Cancel





Certificate Export Wizard

Export Private Key

You can choose to export the private key with the certificate.

Private keys are password protected. If you want to export the private key with the certificate, you must type a password on a later page.

Do you want to export the private key with the certificate?

☒ Yes, export the private key

☐ No, do not export the private key

Next

Cancel





Certificate Export Wizard

Export File Format

Certificates can be exported in a variety of file formats.

Select the format you want to use:

- ☐ DER encoded binary X.509 (.CER)
- ☐ Base-64 encoded X.509 (.CER)
- ☐ Cryptographic Message Syntax Standard - PKCS #7 Certificates (.P7B)
 - ☐ Include all certificates in the certification path if possible
- ☒ Personal Information Exchange - PKCS #12 (.PFX)
 - ☒ Include all certificates in the certification path if possible
 - ☐ Delete the private key if the export is successful
 - ☐ Export all extended properties
 - ☒ Enable certificate privacy
- ☐ Microsoft Serialized Certificate Store (.SST)

Next

Cancel





Certificate Export Wizard



Security

To maintain security, you must protect the private key to a security principal or by using a password.

☐ Group or user names (recommended)

Add

Remove

☒ Password:

Confirm password:

Encryption: AES256-SHA256



Next

Cancel

Select location and Finish



```
Administrator: Command Prompt - cipher /x d:\my-EFS-certific...
Microsoft Windows [Version 10.0.16278.1000]
(c) 2017 Microsoft Corporation. All rights reserved.

C:\WINDOWS\system32>cipher /x d:\my-EFS-certificate
```



Or use Commands



```
Administrator: Command Prompt - cipher /x d:\my-EFS-certific...
Microsoft Windows [Version 10.0.16278.1000]
(c) 2017 Microsoft Corporation. All rights reserved.

C:\WINDOWS\system32>cipher /x d:\my-EFS-certificate
Please type in the password to protect your .PFX file:
_
```

*Enter your
certificate password*

```
Administrator: Command Prompt
Microsoft Windows [Version 10.0.16278.1000]
(c) 2017 Microsoft Corporation. All rights reserved.

C:\WINDOWS\system32>cipher /x d:\my-EFS-certificate
Please type in the password to protect your .PFX file:
Please retype the password to confirm:

EFS certificate(s) is(are) backed up successfully.

C:\WINDOWS\system32>_
```




squash recipies.docx - Word John Jenkinson

Info


squash recipies

Documents


Upload Share Copy path Open file location


Protect Document


Control what types of changes people can make to this document.


Check for Issues

Inspect Document
Before publishing this file, be aware that it contains:
■ Document properties and author's name


Manage Document

There are no unsaved changes.


Manage COM Add-ins

Slow and Disabled COM Add-ins
Manage COM add-ins that are affecting your Word experience.



Properties

Size	11.5KB
Pages	1
Words	1
Total Editing Time	3 Minutes
Title	Add a title
Tags	Add a tag
Comments	Add comments

Related Dates

Last Modified	Today, 3:35 PM
Created	Today, 3:35 PM
Last Printed	

Related People

Author	 John Jenkinson Add an author
Last Modified By	 John Jenkinson

Related Documents

Open File Location

Office Document Password Protect





Home

New

Open

Info

Save

Save As

History

Print

Share

Export

Close

Account

Feedback

Options

Info

squash recipies

Documents

Upload

Share

Copy path

Open file location



Protect Document ▾

Protect Document

Control what types of changes people can make to this document.



Always Open Read-Only

Prevent accidental changes by asking readers to opt-in to editing.



Encrypt with Password

Password-protect this document



Restrict Editing

Control the types of changes others can make



Add a Digital Signature

Ensure the integrity of the document by adding an invisible digital signature



Mark as Final

Let readers know the document is final.



Manage COM Add-ins

Manage COM add-ins that are affecting your Word experience.

ware that it contains:
author's name

nges.

COM Add-ins

Properties ▾

Size	11.5KB
Pages	1
Words	1
Total Editing Time	3 Minutes
Title	Add a title
Tags	Add a tag
Comments	Add comments

Related Dates

Last Modified	Today, 3:35 PM
Created	Today, 3:35 PM
Last Printed	

Related People

Author	John Jenkinson Add an author
Last Modified By	John Jenkinson

Related Documents



Open File Location





Home

New

Open

Info

Save

Save As

History

Print

Share

Export

Close

Account

Feedback

Options

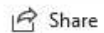
Info

squash recipies

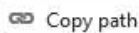
Documents



Upload



Share



Copy path



Open file location



Protect Document ▾

Protect Document

Control what types of changes people can make to this document.



Check for Issues ▾

Inspect

Before publishing

■ Document



Manage Document ▾

Manage Document

There are no unsaved changes.



Manage COM Add-ins

Slow and Disabled COM Add-ins

Manage COM add-ins that are affecting your Word experience.

Properties ▾

Size	11.5KB
Pages	1
Words	1
Total Editing Time	3 Minutes
Title	Add a title
Tags	Add a tag
Comments	Add comments

Related Dates

Last Modified	Today, 3:35 PM
Created	Today, 3:35 PM
Last Printed	

Related People

Author	 John Jenkinson
	Add an author
Last Modified By	 John Jenkinson

Related Documents

 Open File Location

Encrypt Document

Encrypt the contents of this file

Password:

••••••••••

Caution: If you lose or forget the password, it cannot be recovered. It is advisable to keep a list of passwords and their corresponding document names in a safe place. (Remember that passwords are case-sensitive.)

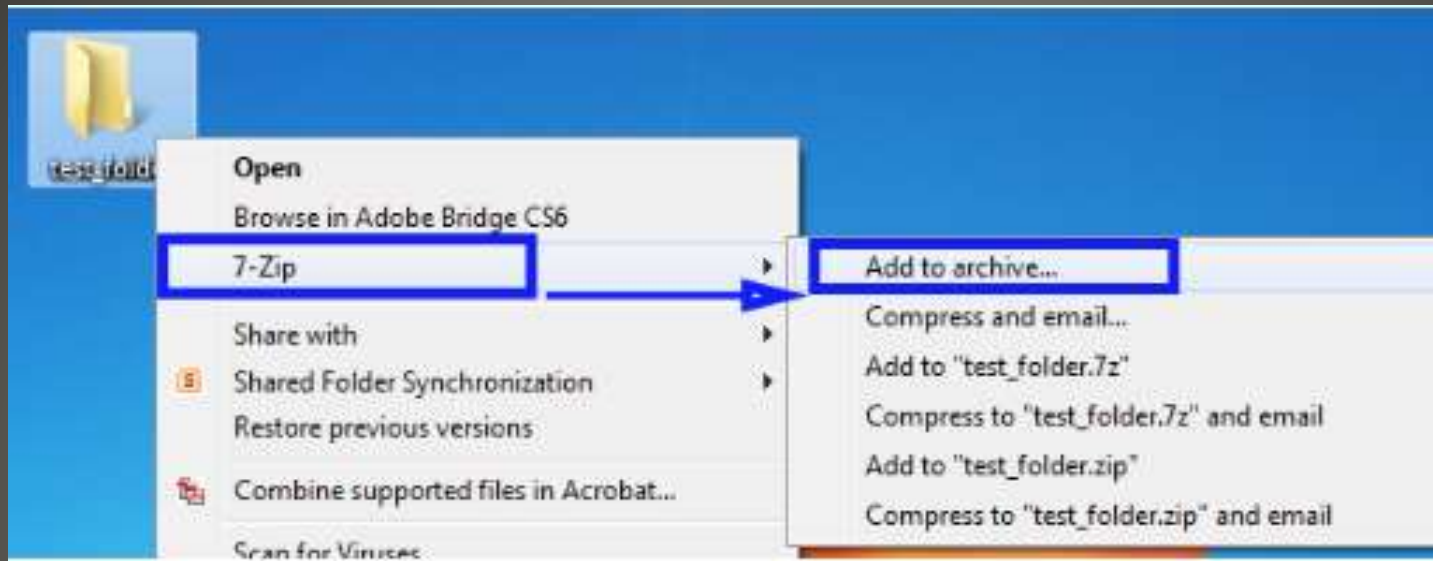
OK

Cancel

- No EFS
- Internet scripts
- WinRAR
- 7-Zip
- Microsoft Store

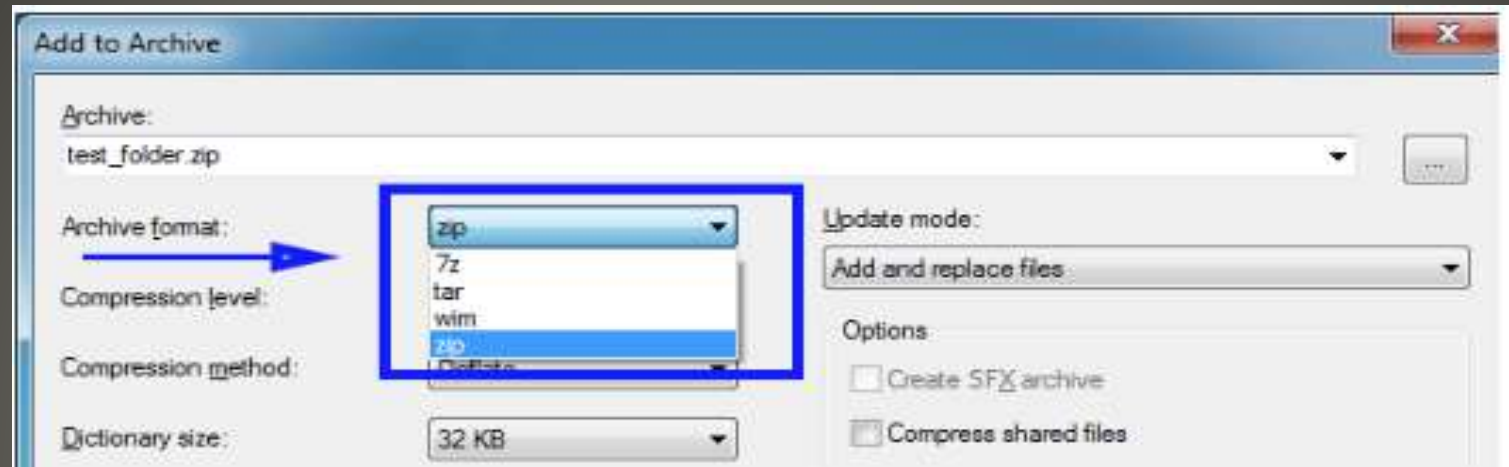
Windows 10 Home





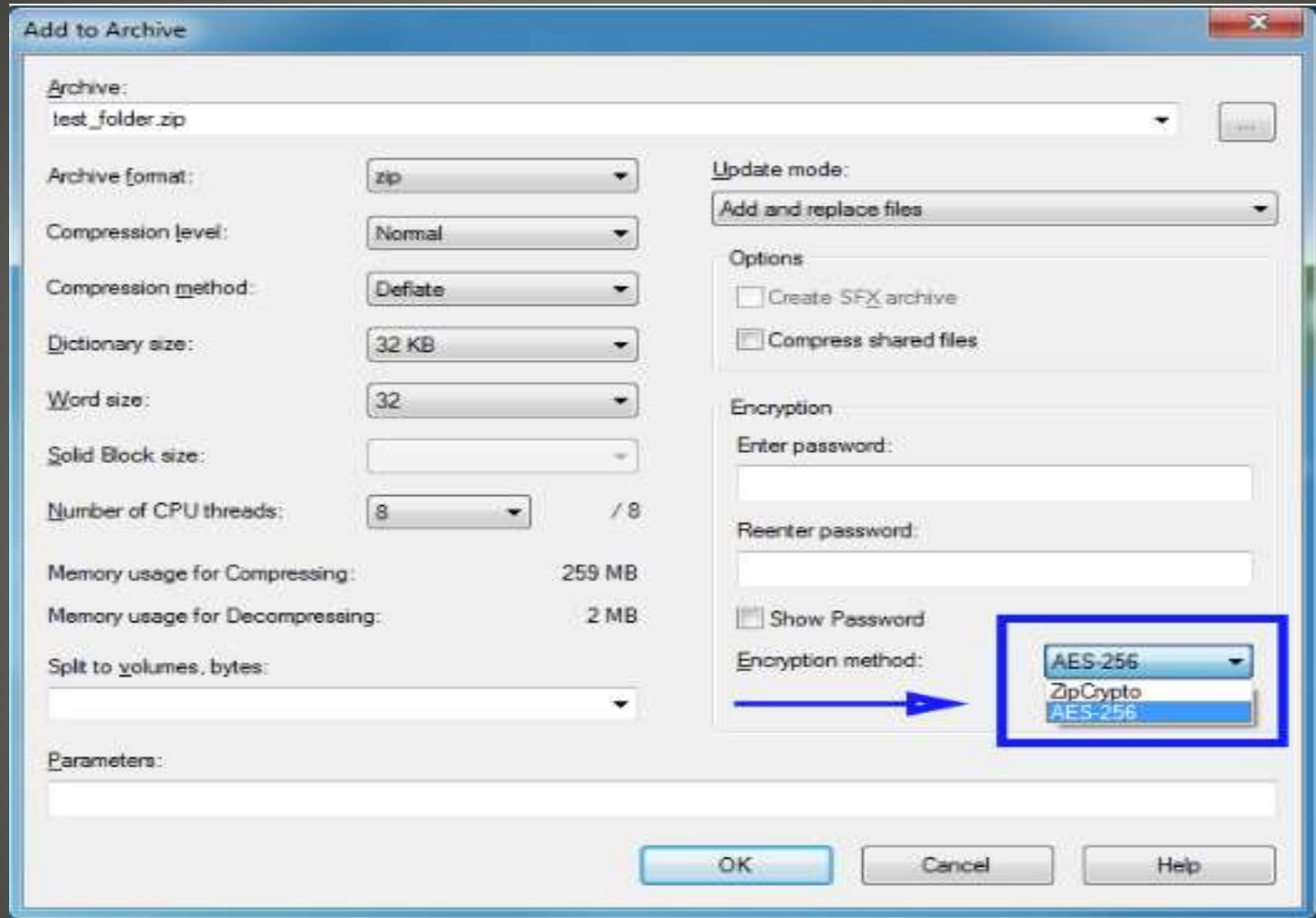
7-Zip





7-Zip





7-Zip



Add to Archive

Archive: test_folder.zip

Archive format: zip

Compression level: Normal

Compression method: Deflate

Dictionary size: 32 KB

Word size: 32

Solid Block size:

Number of CPU threads: 8 / 8

Memory usage for Compressing: 259 MB

Memory usage for Decompressing: 2 MB

Split to volumes, bytes:

Parameters:

Update mode: Add and replace files

Options

- ☐ Create SFX archive
- ☒ Compress shared files

Encryption

Enter password:

Reenter password:

☐ Show Password

Encryption method: AES-256

OK Cancel Help

7-Zip



- Secure PII
- Communicate decryption passphrase out of band
- Consider the disposition of original
- TWO EDGED SWORD
- Protection from any/everyone without passcode
- Can include you!

Encryption



- None of us are as experienced as all of us
- Awareness, Preparedness, Understanding
- Participate
- Topic Suggestions
- Questions: scccwindows@gmail.com

